

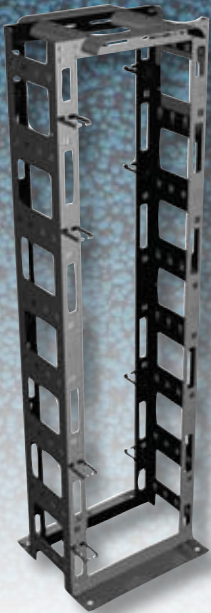
Great Lakes



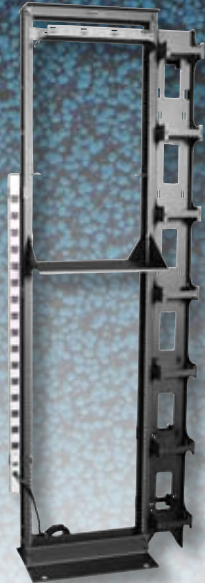
Great Lakes Case & Cabinet Co., Inc.

RACKS

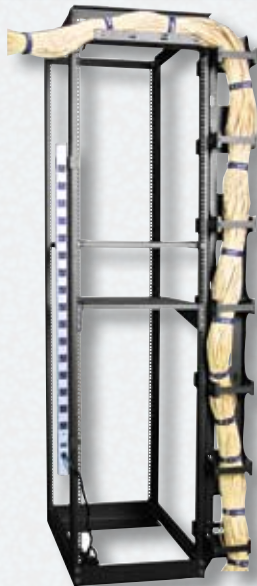
CMR-45U



GLRR-1984BA



4PM6-29



4PHD29



www.WeRackYourWorld.com

product spotlight

We've got
your rack!

Part No.	Description
CMR-45	Cable Management Rack 84.00"H x 24.00"W x 21.00"D
4PHD29	Heavy Duty Four Post Rack 80.50"H x 20.60"W x 29.00"D
4PM6-29	Four Post Rack w/12-24 thread mounting 84.00"H x 20.60"W x 29.00"D
GLRR-1984BA	Rack component part list: (2) vertical uprights, (2) base angles, (2) top angles, (12) 1/2" - 13 x 1 hexhead bolts and (12) 1/2" lock washers, (50) 12-24 x 1/2" mounting screws 84.00"H x 20.31"W x 14.00"D

More details on reverse side of this Product Spotlight.



Great Lakes Case & Cabinet Co., Inc.

CMR-45U

DIMENSIONS: 84.00"H x 24.00"W x 21.00"D • 45 RMU • Weight Capacity: 1000 lbs.

FEATURES:

- 7' high - 19" EIA 310-D compliant Cable Mgt. Rack (adjustable to 23" mtg.)
- 23.938"W x 21.000"D Foot print will fit on 24" floor tile
- Manage high-density network equipment with ample cable room
- Top front & rear waterfall cable tray
- Two middle adjustable waterfall brackets (2)
- Tapped #12-24 front and back
- Large channels- 3.063" x 12.00"
- More than 88 cable tie slots

4PHD29

DIMENSIONS: 80.50"H x 20.6"W x 29.00"D • 42 RMU • Weight Capacity: 2000 lbs. (750 on casters)

FEATURES:

- 19" EIA 310-D compliant
- Universal M6 Cage Nut Mounting
- Assembly hardware included
- Equipment mounting hardware included (50 x M6 Cage Nuts & Screws)
- Ganging with 2 post racks possible
- Ships unassembled- easy to assemble
- Available with casters

4PM6-29

DIMENSIONS: 84.00"H x 20.6"W x 29.00"D • 45 RMU • Weight Capacity: 1000 lbs.

CONSTRUCTION

- 12 Gauge Cold Rolled Steel (CRS) with M6 mounting
- Also available in black anodized aluminum with #12-24 mounting
- 19" EIA 310-D Compliant Mtg.
- Ask about additional sizes

GLRR-1984BA

DIMENSIONS: 84.00"H x 20.31"W x 14.00"D • 45 RMU • Weight Capacity: 750 lbs.

CONSTRUCTION:

- Double Sided Extruded Aluminum, #12-24 Tapped Holes
- 19" EIA 310-D Compliant Mtg.

FINISH:

- GLRR-1984 - Silver Anodized
- GLRR-1984BA - Black Anodized

weRack
your
World!

Corporate Headquarters

P.O. Box 551 • Edinboro, PA 16412 • 1-866-TRY-GLCC • (1-866-879-4522) • Phone: 814.734.7303 • Fax: 814.734.3907 • glcc@greatcabinets.com

Western Distribution • 535 East Glendale Avenue • Sparks, NV 89431 • Phone: 775.829.9913 • Fax: 775.829.9926

Great Lakes International • Aerbridge House • Dunshaughlin Business Park • Dunshaughlin Co. Meath • Ireland • Phone: 003531 8258777 • Fax: 003531 8258778