

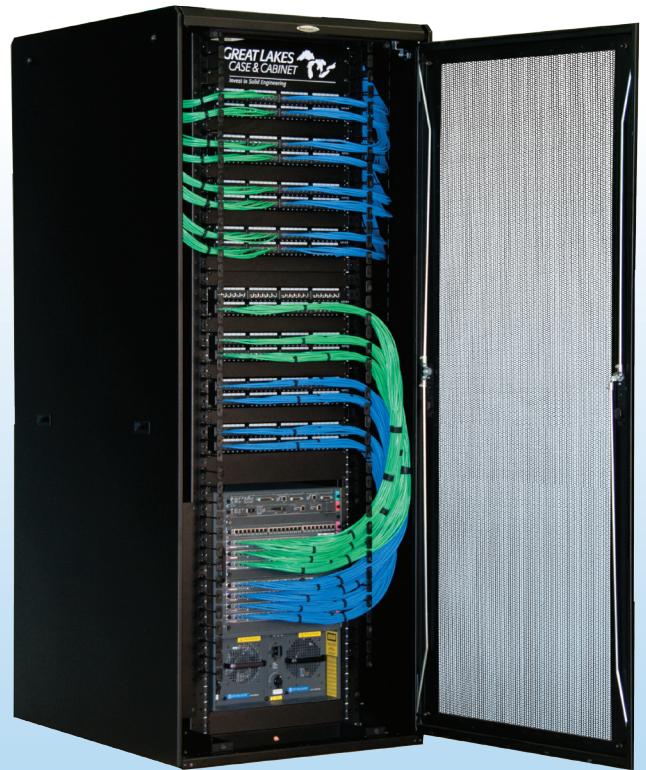
product spotlight

ENHANCED NETWORKING (EN) ENCLOSURE

Great Lakes' Enhanced Networking (EN) Enclosures provide cable management and cooling support for networking and switch applications. The EN Enclosure is 84"H and is available in two sizes: GL840EN-3242 (32"W x 42"D) GL840EN-4048 (40"W x 48"D) *The GL840EN-4048 (84"H x 40"W x 48"D) is designed specifically to accommodate the CISCO Nexus 7018 Series switch (25 RMU baffles are included).*

Some basic features of the EN Series Enclosure include:

- 2,000 pound weight capacity
- 45 RMU, labeled, 19" EIA, 310-D Compliant Mounting Rails
- Rails are available tapped #12-24 or M6 (cage nut, 3/8" square)
- Front rails are fixed; rear rails are adjustable
- Side panels are available as individual parts (Part #8410421ENLS)
- Front doors open to the left or right (32"W x 42"D); When two enclosures are ganged together (side panels must be removed) G101EN ganging kit, the doors can open in opposite directions. (40"W x 48"D has split mesh doors, front & rear.)
- EN Enclosures accept any of the top panels offered for our ES enclosures
- Accepts our LRB-12 and LRB-24 Ladder Rack Brackets
- Knockouts and openings for top and bottom cable access (Top knockout can be easily "sealed-up" with our standard 3" brush grommet)
- Repositionable CM-47 finger sections are installed along the face of each rail (Additional fingers can be purchased for use on side rails to help with front-to-rear cable management)
- Open side area accommodates large bundles within and between ganged enclosures
- Baffle kits for CISCO switches (and other side-to-side airflow equipment) directs cool air in and exhaust out of equipment (Please see page 37 of our catalog)
- Optional Zero U mounting brackets allow vertical mounting of patch panels & power strips to save valuable RMU space



The EN Enclosure is shipped fully assembled with levelers and is capable of handling simple to complex data, switch, server and cable management requirements. (Casters are available as a special order, upon request.)

EN enclosures are designed with built-in features to manage high density cable management applications of switches and servers.

SPECIFICATIONS: GL840EN - 3242

CONFIG. # KIT INCLUDES: QTY. 1 8401ENX3242, BASE FRAME UNIT WITH RAILS
 QTY. 1 8402EN32SM, SPLIT MESH REAR DOOR ASSEMBLY
 QTY. 1 8402ENM32, MESH FRONT DOOR ASSEMBLY
 QTY. 2 8410421ENLS, SOLID LIFT-OFF SIDE PANEL ASSEMBLY

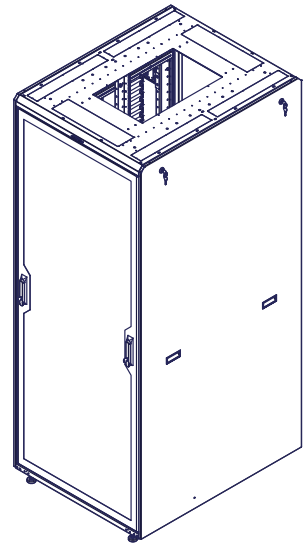
DIMENSIONS : 84.0"H x 32.0"W x 42.0"D

RACK SPACES : 45 RMU w/ NUMBERED RMU INDICATORS, 19" EIA 310-D COMPLIANT.

COLOR : DURABLE TEXTURED BLACK POWDER COATING

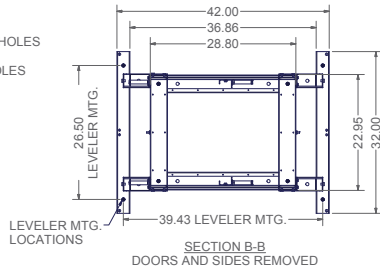
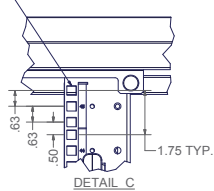
CONSTRUCTION : FULL WELDED FRAME WITH RECESSED #12 GA CORNER POSTS
 1 PAIR FIXED #12 GA RAILS, 1 PAIR ADJUSTABLE DEPTH #12 GA RAILS
 DOORS #16 C.R.S. & SIDE PANELS LIGHT-WEIGHT ALUMINUM

HARDWARE : PACKAGE OF QTY-50; #12-24 SCREWS -OR- M6 SCREWS W/ CAGE NUTS, INCLUDED.



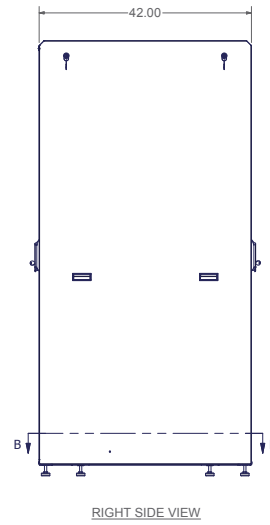
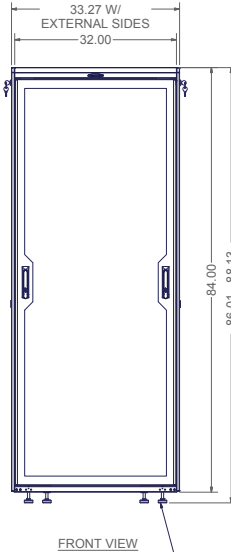
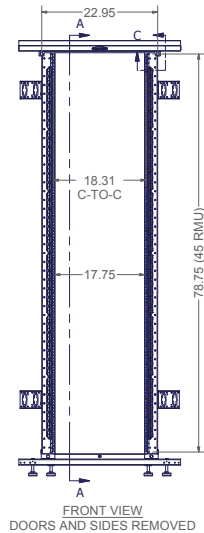
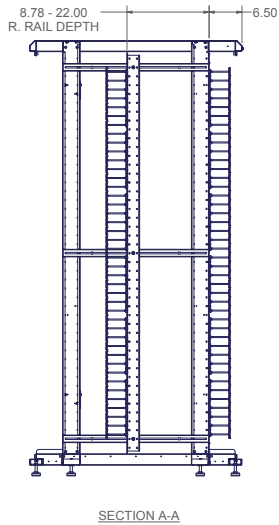
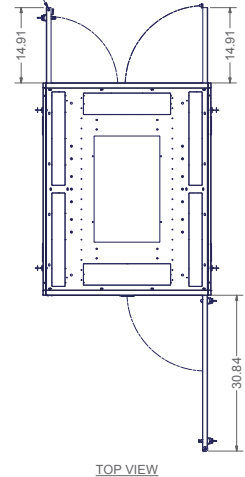
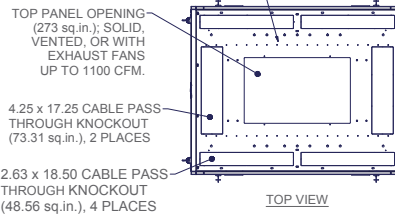
CONFIG PART #	
840ENT3242MSS	840EN3242MSS
EN FRAME 84"H x 32"W x 42"D WITH DUAL HINGE PERF FRONT DOOR, SPLIT PERF REAR DOOR, SOLID SIDES, 45 RMU W/ #12-24 TAPPED RAILS	EN FRAME 84"H x 32"W x 42"D WITH DUAL HINGE PERF FRONT DOOR, SPLIT PERF REAR DOOR, SOLID SIDES 45 RMU W/ M6 RAILS

19" EIA 310-D COMPLIANT
 REF. PART # FOR:
 #12-24 TAPPED EQUIP. MTG. HOLES
 -OR-
 3/8" SQUARE EQUIP. MTG. HOLES
 W/ M6 HARDWARE



SPLIT MESH REAR DOORS
 PART # 8402EN32SM

INDEPENDENT MOUNTING LOCATIONS
 FOR LADDER RACK BRACKETS OR
 TOP MOUNTED CABLE TROUGHS



LEVELING GLIDES (8 INCLUDED)
 1/2-13 UNC THREADED HOLES

To view the drawing for the GL840EN-4048 please visit <http://werackyourworld.com/products/enclosures/EN/>

CORPORATE HEADQUARTERS

P.O. Box 551
 Edinboro, PA 16412
 1.866.TRY.GLCC
 (1.866.879.4522)
 Phone: 814.734.7303
 Fax: 814.734.3907
 glcc@greatcabinets.com

GREAT LAKES MANUFACTURING, INC.

1521 Enterprise Road
 Corry, PA 16407
 Phone: 814.734.2436
 Fax: 814.665.7025
 werackyourworld.com
 glm@greatmanufacturing.net

WESTERN DISTRIBUTION

4750 Joule Street
 Reno, NV 89502
 Phone: 775.829.9913
 Fax: 775.829.9926
 glcc@greatcabinets.com

GREAT LAKES INTERNATIONAL LTD.

Aerbridge House, Unit 14
 Dunshaughlin Business Park
 Dunshaughlin Co. Meath
 Ireland
 Phone: 011 353 1 825 8777
 Fax: 011 353 1 825 8778

GREAT LAKES HUNGARY KFT

Zsurló utca 13
 8000 Székesfehérvár
 Hungary
 Phone: 011 36 22 880 420
 Fax: 011 36 22 880 429