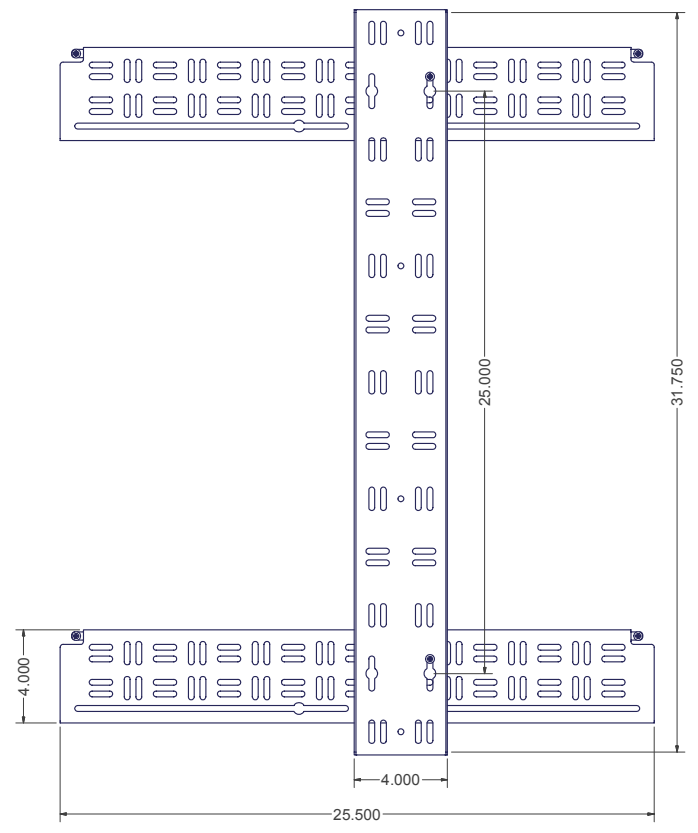
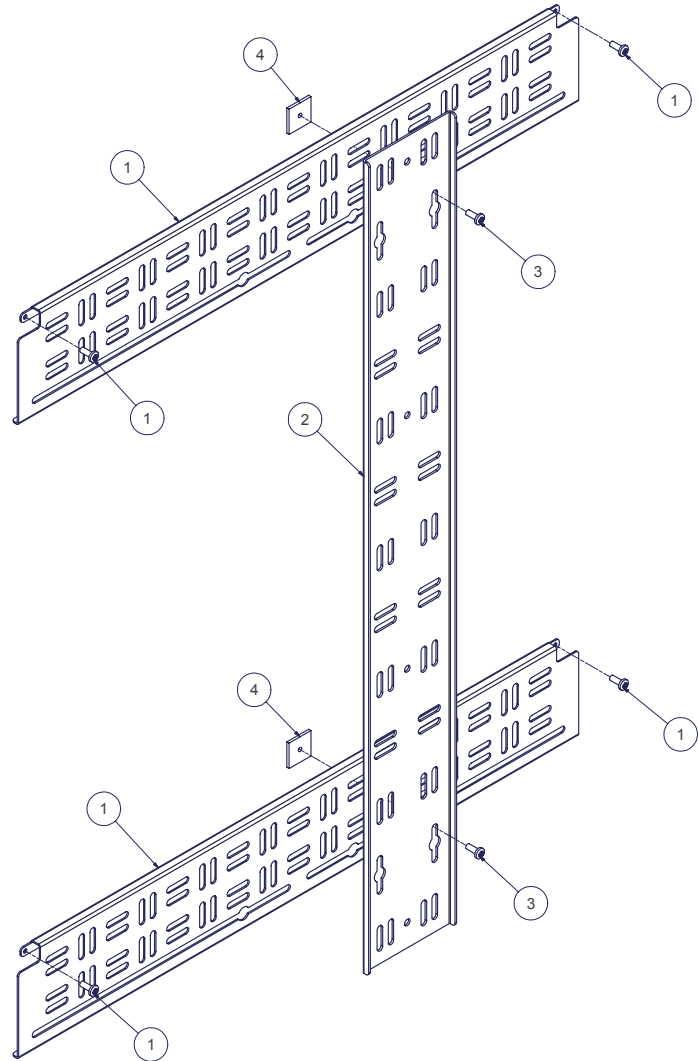


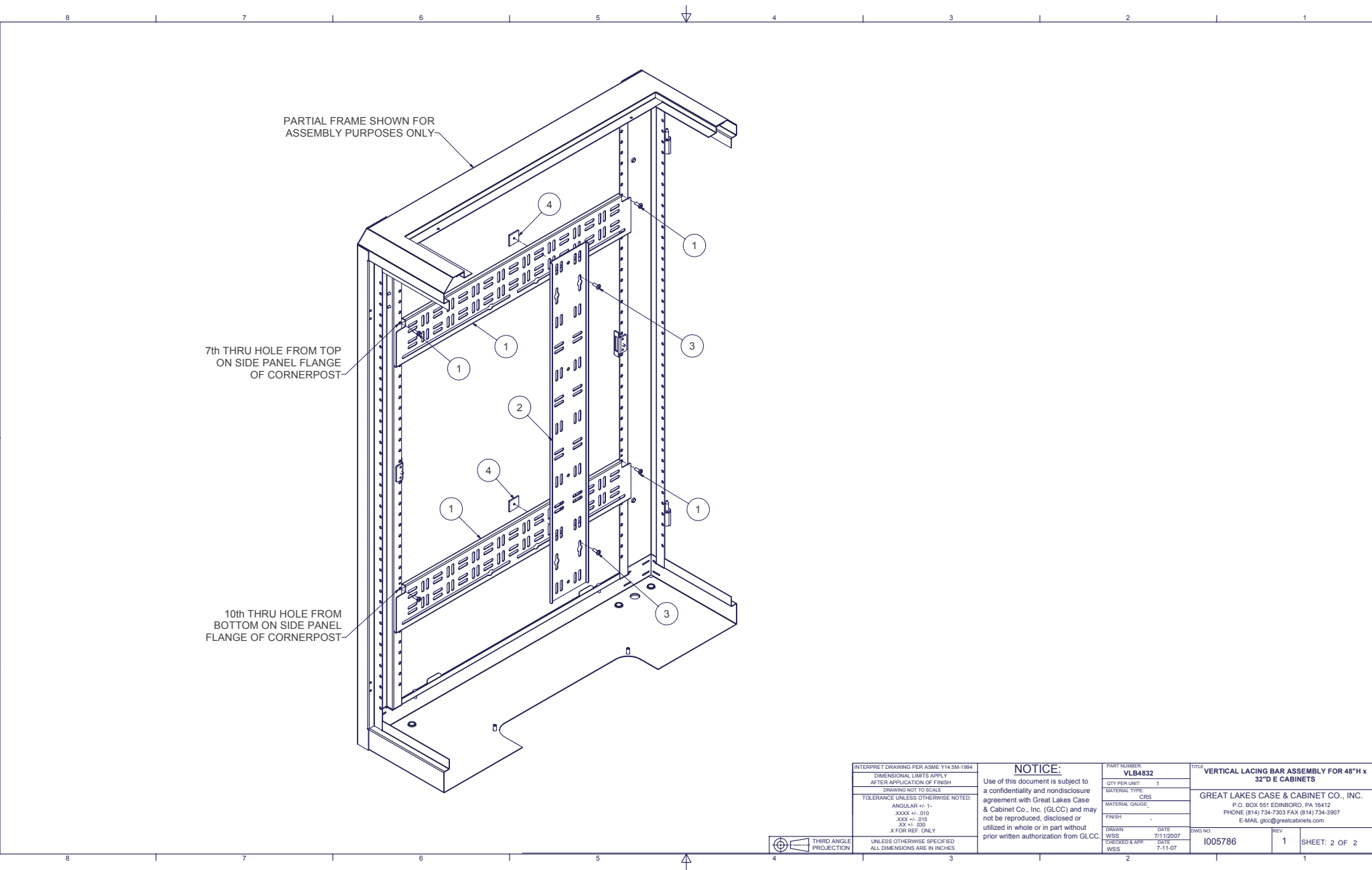
REVISION HISTORY			
REV	DESCRIPTION	DATE	APPROVED
0	ECO-01992	7/11/2007	JL
1	ECO-02701	10/29/2009	FED

Bill of Material						
ITEM	PART NUMBER	STOCK NUMBER	QTY	DESCRIPTION	FILE NAME	REV
1	HLB32X100		2	HORIZONTAL LACING BAR FOR 32"D E CABINETS	I000686.lam	1
2	VLB48X100		1	VERTICAL LACING BAR FOR 48"H ENHANCED - DETAIL	I005784.ipt	1
3	H01-078	H01-078	2	SCREW, 10-32x1/2" PH PAN TYPE Z3 BLACK OXIDE/WAX RoHS	SCR1032X500BLK.ipt	-
4	LBSNX100		2	SLIDING NUT FOR LACING BARS	I000631.ipt	2



INTERPRET DRAWING PER ASME Y14.5M-1994 DIMENSIONAL LIMITS APPLY AFTER APPLICATION OF FINISH DRAWING NOT TO SCALE TOLERANCE UNLESS OTHERWISE NOTED: ANGULAR +/- 1° XXXX +/- .010 XXX +/- .015 XX +/- .030 X FOR REF. ONLY		<b>NOTICE:</b> Use of this document is subject to a confidentiality and nondisclosure agreement with Great Lakes Case & Cabinet Co., Inc. (GLCC) and may not be reproduced, disclosed or utilized in whole or in part without prior written authorization from GLCC.		PART NUMBER: <b>VLB4832</b> QTY PER UNIT: 1 MATERIAL TYPE: CRS MATERIAL GAUGE: FINISH: #16 GA		TITLE: <b>VERTICAL LACING BAR ASSEMBLY FOR 48"H x 32"D E CABINETS</b> GREAT LAKES CASE & CABINET CO., INC. P.O. BOX 551 EDINBORO, PA 16412 PHONE: (814) 734-7303 FAX: (814) 734-3907 E-MAIL: glcc@greatscabinets.com	
UNLESS OTHERWISE SPECIFIED ALL DIMENSIONS ARE IN INCHES		DRAWN: JL CHECKED & APP: WSS		DATE: 7/11/2007 DATE: 7-11-07		DWG NO: <b>I005786</b> REV: <b>1</b> SHEET: 1 OF 2	





INTERPRET DRAWING PER ASME Y14.5M-1994

DIMENSIONAL LIMITS APPLY AFTER APPLICATION OF FINISH

DRAWING NOT TO SCALE

TOLERANCE UNLESS OTHERWISE NOTED:  
 ANGULAR ± .1°  
 XXXX ± .010  
 XXX ± .015  
 XX ± .030  
 X FOR REF. ONLY

UNLESS OTHERWISE SPECIFIED ALL DIMENSIONS ARE IN INCHES

**NOTICE:**

Use of this document is subject to a confidentiality and nondisclosure agreement with Great Lakes Case & Cabinet Co., Inc. (GLCC) and may not be reproduced, disclosed or utilized in whole or in part without prior written authorization from GLCC.

PART NUMBER: **VLB4832**

QTY PER UNIT: 1

MATERIAL TYPE: CRS

MATERIAL GAUGE:

FINISH: -

DRAWN: WSS DATE: 7/11/2007

WSS CHECKED & APP: WSS 7-11-07

TITLE: **VERTICAL LACING BAR ASSEMBLY FOR 48"H x 32"D E CABINETS**

GREAT LAKES CASE & CABINET CO., INC.

P.O. BOX 551 EDINBORO, PA 16412

PHONE: (814) 734-7323 FAX: (814) 734-3907

E-MAIL: glcc@greatscabinets.com

DWG NO: **I005786**

REV: 1

SHEET: 2 OF 2

