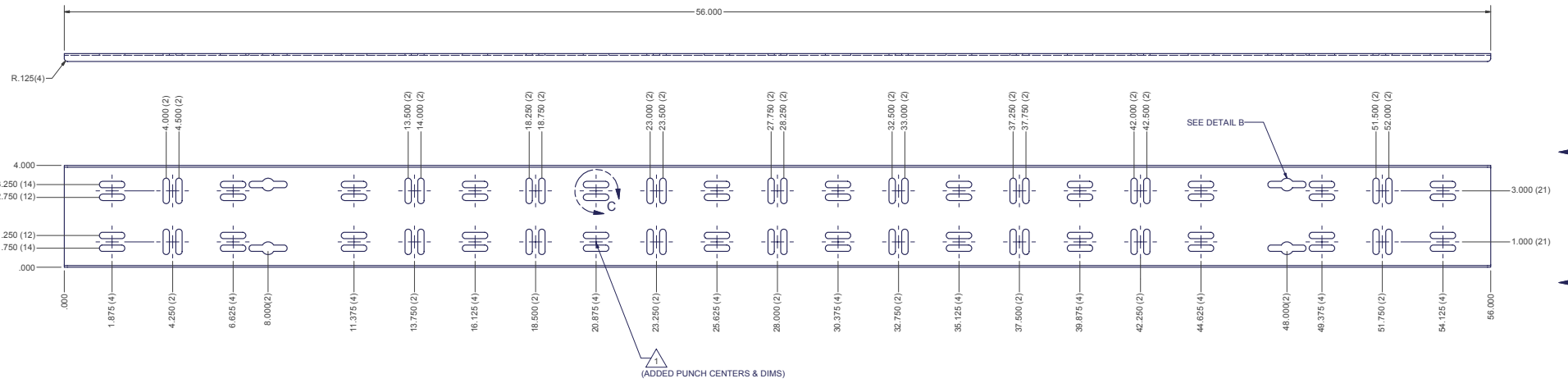
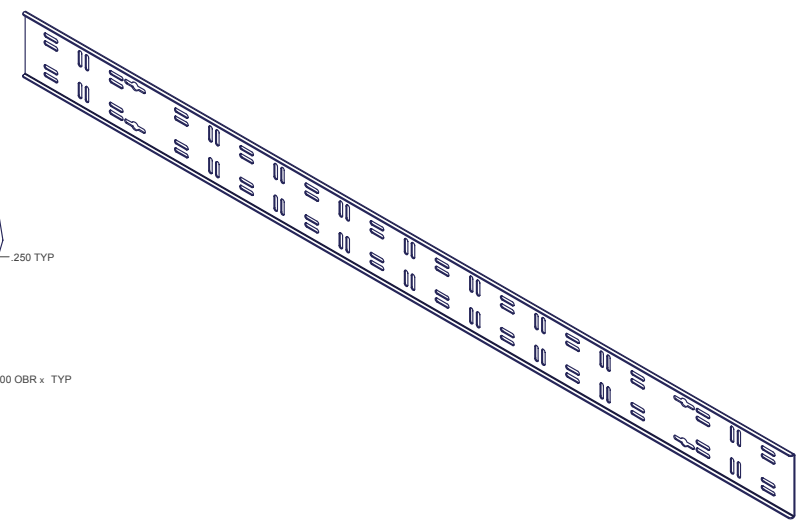
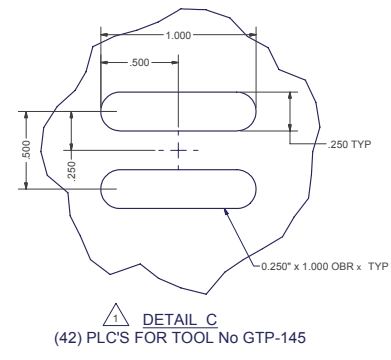
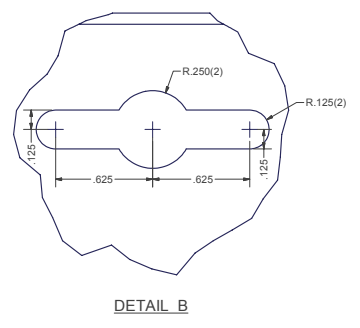
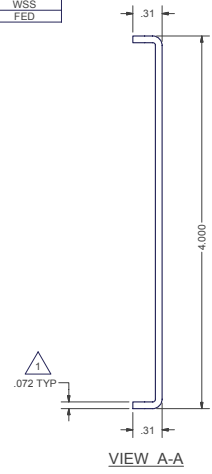


REVISION HISTORY			
REV	DESCRIPTION	DATE	APPROVED
0	ECO-01131	8/22/2002	WSS
1	ECO-02701	10/28/2009	FED



INTERPRET DRAWING PER ASME Y14.5M-1994
DIMENSIONAL LIMITS APPLY AFTER APPLICATION OF FINISH
DRAWING NOT TO SCALE
TOLERANCE UNLESS OTHERWISE NOTED: ANGULAR +/- 1- XXX +/- .010 XXX +/- .015 XXX +/- .030 X FOR REF. ONLY
UNLESS OTHERWISE SPECIFIED ALL DIMENSIONS ARE IN INCHES

NOTICE:
Use of this document is subject to a confidentiality and nondisclosure agreement with Great Lakes Case & Cabinet Co., Inc. (GLCC) and may not be reproduced, disclosed or utilized in whole or in part without prior written authorization from GLCC.

PART NUMBER: VLB72
QTY PER UNIT: 1
MATERIAL TYPE: CRS
MATERIAL GRADE: #16 GA
FINISH: SEE NOTES
DRAWN: JAL
CHECKED & APP: CA
DATE: 2/27/2003
DATE: 3-6-03

TITLE: VERTICAL LACING BAR FOR 72"H E CABINETS
GREAT LAKES CASE & CABINET CO., INC. P.O. BOX 551 EDINBORO, PA 16412 PHONE: (814) 734-7303 FAX: (814) 734-3907 E-MAIL: glcc@greatlakescabinets.com
DWG NO: I000688
REV: 1
SHEET: 1 OF 1

