

GL84CL3PF

INTERPRET DRAWING PER ASME Y14.5M-1994 DIMENSIONAL LIMITS APPLY AFTER APPLICATION OF FINISH DRAWING NOT TO SCALE TOLERANCE UNLESS OTHERWISE NOTED: ANGULAR +/- 1° .XXX +/- .010 .XX +/- .015 .X +/- .030 .X FOR REF. ONLY
UNLESS OTHERWISE SPECIFIED ALL DIMENSIONS ARE IN INCHES

NOTICE:
 Use of this document is subject to a confidentiality and nondisclosure agreement with Great Lakes Case & Cabinet Co., Inc. (GLCC) and may not be reproduced, disclosed or utilized in whole or in part without prior written authorization from GLCC.

PART NUMBER: GL84CL3PF	TITLE 84"H x 28"W x 36"D, THREE-DOOR CO-LOCATION CABINET
QTY PER UNIT: 1	GREAT LAKES CASE & CABINET CO., INC. P.O. BOX 551 EDINBORO, PA 16412 PHONE (814) 734-7303 FAX (814) 734-3907 E-MAIL glcc@greatcabinets.com
MATERIAL TYPE: CRS	
MATERIAL GAUGE: VARIES	
FINISH: BLACK POWDER COAT	DRAWN: JL DATE: 8/7/2008 CHECKED & APP: WSS DATE: 5/5/2011

DWG NO. GL84CL3PF	REV 6	SHEET: 1 OF 3
-----------------------------	-----------------	---------------



FULLY ADJUSTABLE 19"EIA
EQUIPMENT RAILS, 3/8" SQ.

PERIMETER VENTED PLEXIGLAS DOOR

CABLE MANAGEMENT RACEWAYS
SECURE FROM EACH COMPARTMENT
(CABLE ENTRY FROM BOTTOM SHOWN)

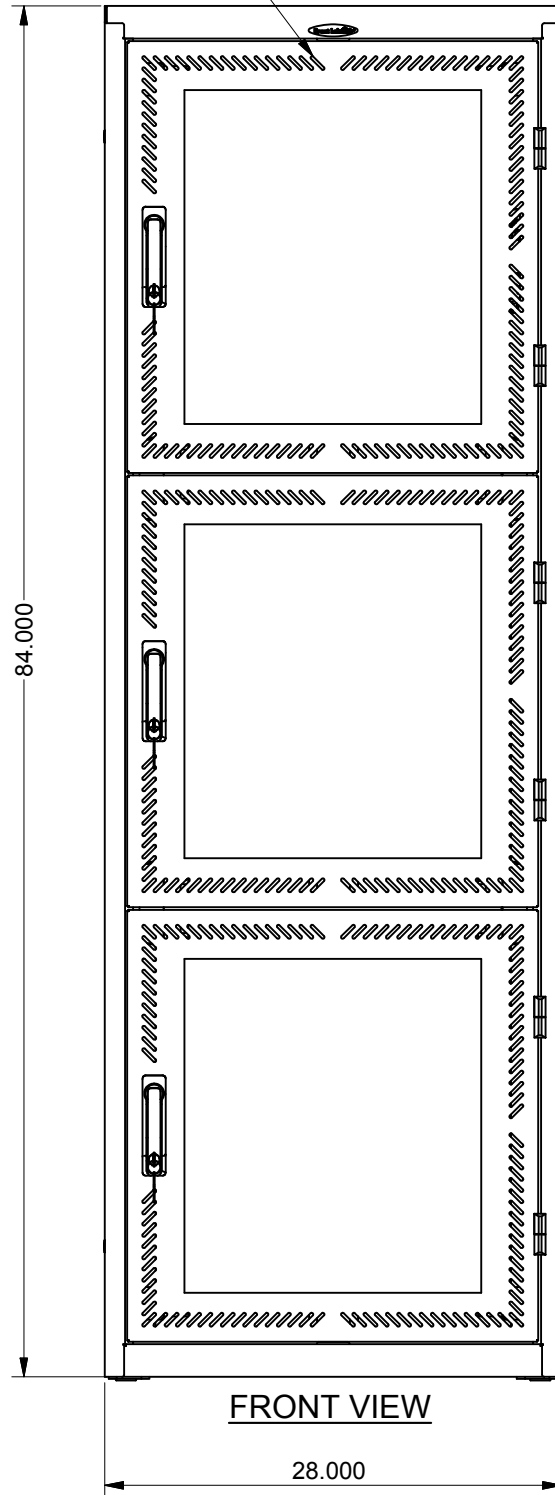
SOLID REAR DOOR W/ EXHAUST FANS,
150 CFM TOTAL PER DOOR

18.312
CENTERS

17.750
OPENING

24.625 = 14 RMU
(PER COMPARTMENT)

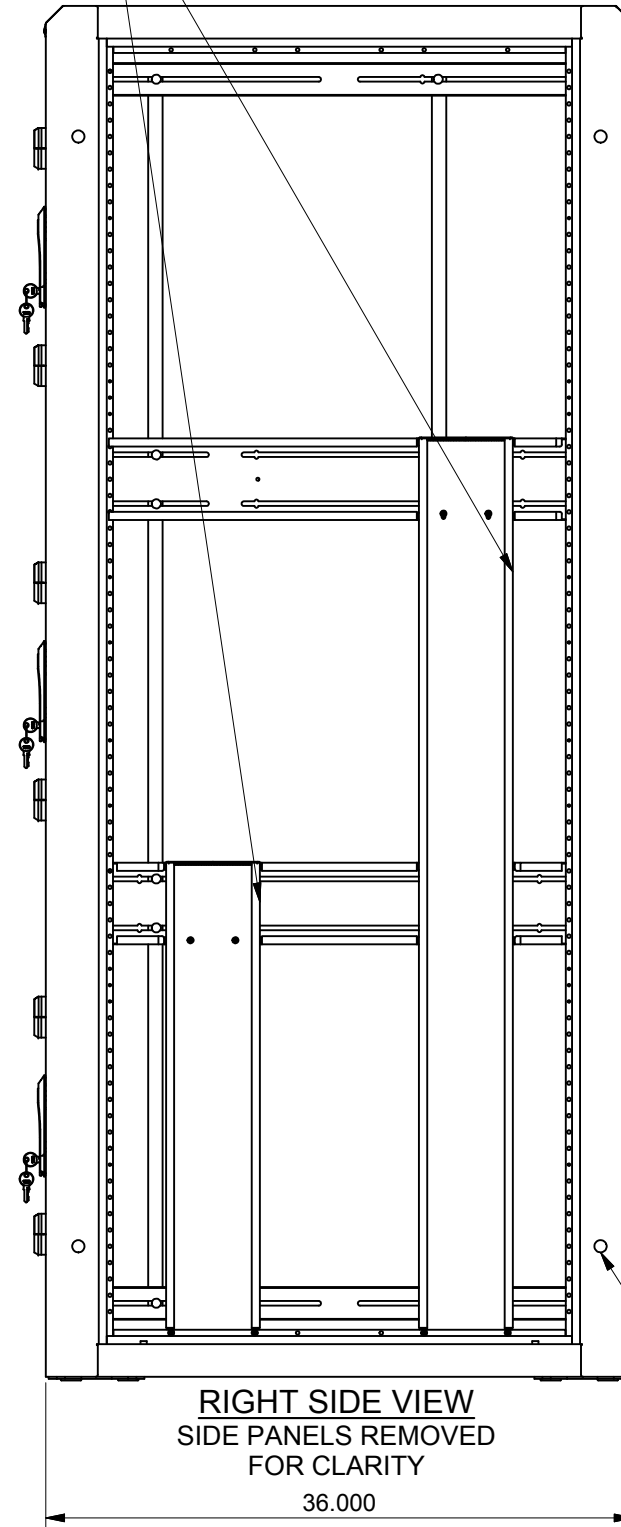
FRONT VIEW
DOORS REMOVED FOR CLARITY



FRONT VIEW

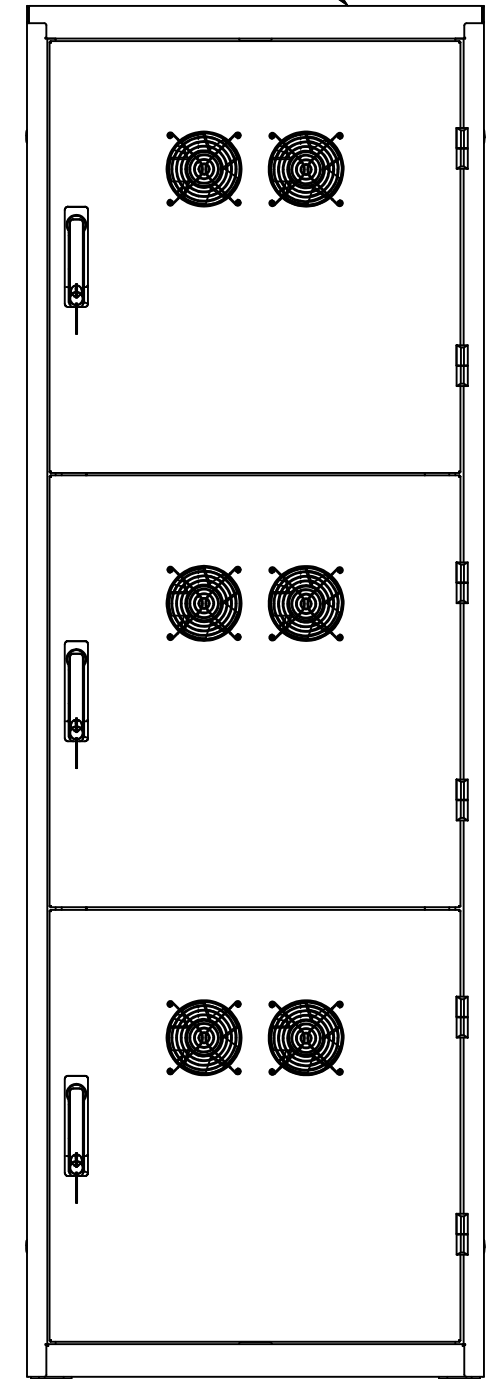
28.000

84.000



RIGHT SIDE VIEW
SIDE PANELS REMOVED
FOR CLARITY

36.000



REAR VIEW

NETWORKING HOLES FOR
OPTIONAL G101 HARDWARE

INTERPRET DRAWING PER ASME Y14.5M-1994
DIMENSIONAL LIMITS APPLY
AFTER APPLICATION OF FINISH
DRAWING NOT TO SCALE
TOLERANCE UNLESS OTHERWISE NOTED:
ANGULAR +/- .1°
.XXXX +/- .010
.XXX +/- .015
.XX +/- .030
.X FOR REF. ONLY

NOTICE:

Use of this document is subject to a confidentiality and nondisclosure agreement with Great Lakes Case & Cabinet Co., Inc. (GLCC) and may not be reproduced, disclosed or utilized in whole or in part without prior written authorization from GLCC.

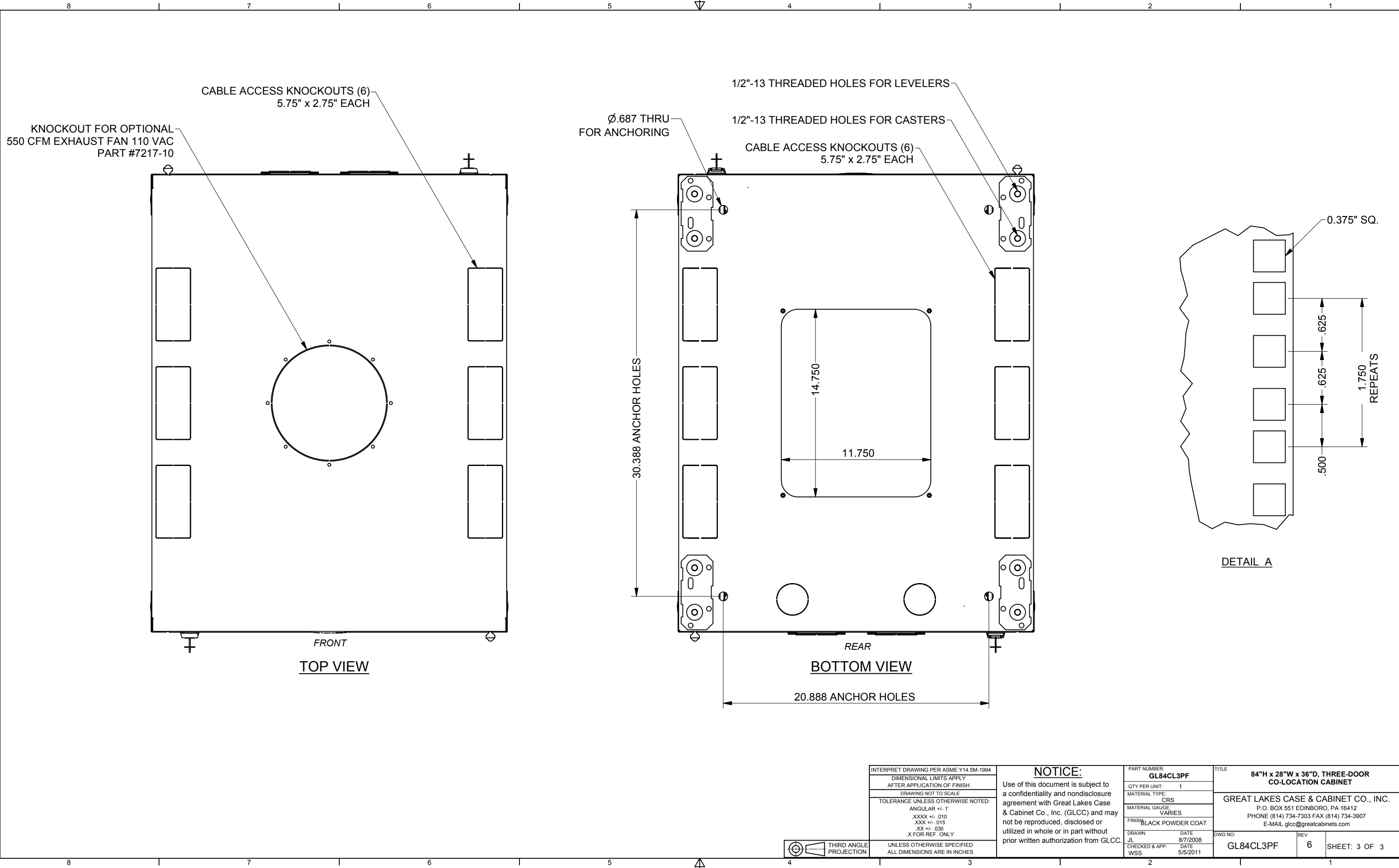
PART NUMBER:
GL84CL3PF
QTY PER UNIT: 1
MATERIAL TYPE:
CRS
MATERIAL GAUGE:
VARIES
FINISH:
BLACK POWDER COAT
DRAWN: JL DATE: 8/7/2008
CHECKED & APP.: WSS DATE: 5/5/2011

TITLE
**84"H x 28"W x 36"D, THREE-DOOR
CO-LOCATION CABINET**
GREAT LAKES CASE & CABINET CO., INC.
P.O. BOX 551 EDINBORO, PA 16412
PHONE (814) 734-7303 FAX (814) 734-3907
E-MAIL glcc@greatcabinets.com

THIRD ANGLE
PROJECTION

UNLESS OTHERWISE SPECIFIED
ALL DIMENSIONS ARE IN INCHES

DWG NO:
GL84CL3PF
REV: 6
SHEET: 2 OF 3



INTERPRET DRAWING PER ASME Y14.5M-1994
 DIMENSIONAL LIMITS APPLY
 AFTER APPLICATION OF FINISH
 DRAWING NOT TO SCALE
 TOLERANCE UNLESS OTHERWISE NOTED:
 ANGULAR +/- .1"
 .XXXX +/- .010
 .XXX +/- .015
 .XX +/- .030
 .X FOR REF. ONLY

NOTICE:
 Use of this document is subject to a confidentiality and nondisclosure agreement with Great Lakes Case & Cabinet Co., Inc. (GLCC) and may not be reproduced, disclosed or utilized in whole or in part without prior written authorization from GLCC.

PART NUMBER: **GL84CL3PF**
 QTY PER UNIT: 1
 MATERIAL TYPE: CRS
 MATERIAL GAUGE: VARIES
 FINISH: BLACK POWDER COAT

TITLE: **84"H x 28"W x 36"D, THREE-DOOR CO-LOCATION CABINET**
 GREAT LAKES CASE & CABINET CO., INC.
 P.O. BOX 551 EDINBORO, PA 16412
 PHONE (814) 734-7303 FAX (814) 734-3907
 E-MAIL glcc@greatcabinets.com



UNLESS OTHERWISE SPECIFIED ALL DIMENSIONS ARE IN INCHES

DRAWN: JL DATE: 8/7/2008
 CHECKED & APP. DATE: 5/5/2011
 WSS

DWG NO: **GL84CL3PF** REV: **6** SHEET: 3 OF 3