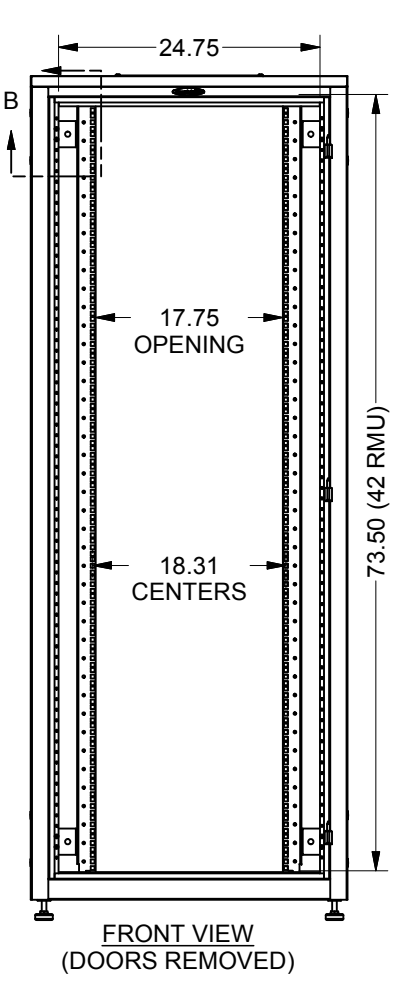


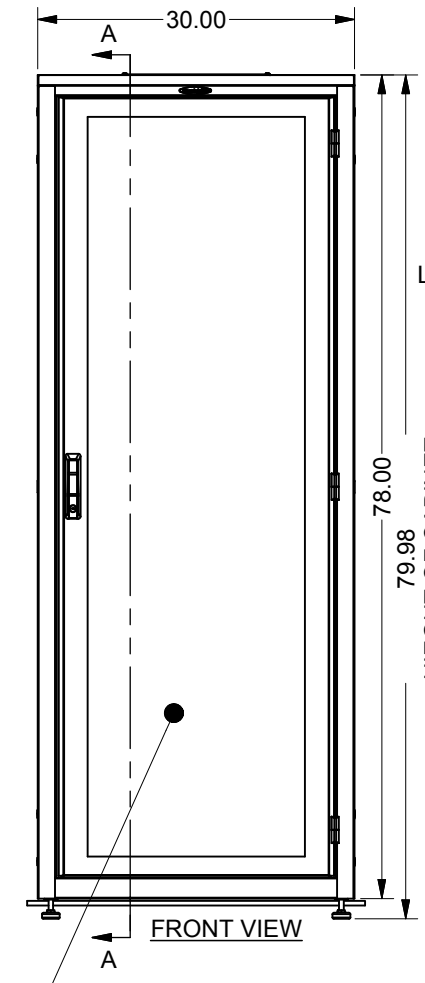
3/8" SQUARE MTG. HOLES 19" EIA 310-D COMPLIANT

TOP PANEL OPENING (273 sq. in.) SOLID, VENTED, OR WITH EXHAUST FANS UP TO 1100 CFM

INDEPENDENT MOUNTING LOCATIONS FOR LADDER RACK BRACKETS OR TOP MOUNTED CABLE TROUGHS



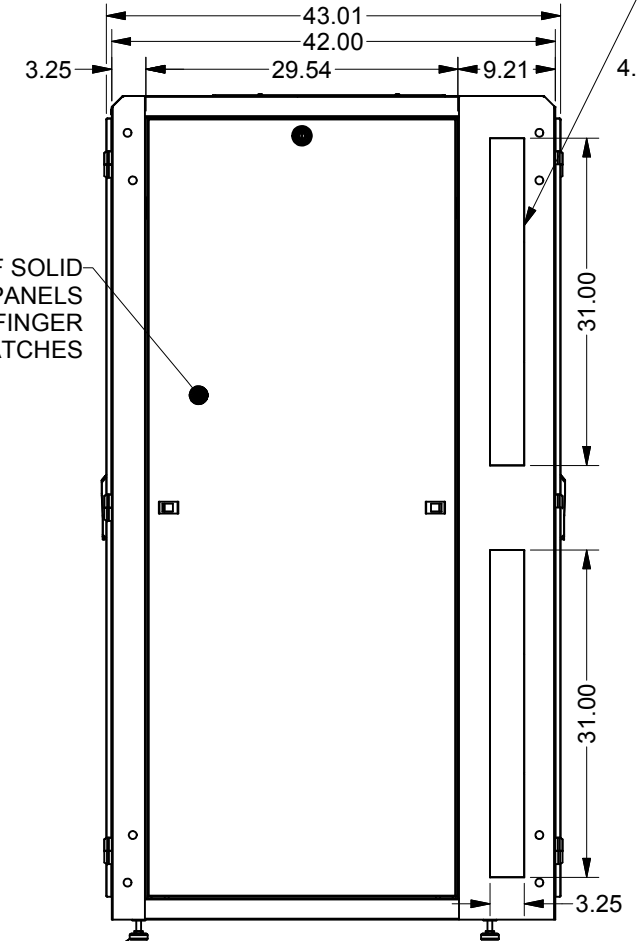
FRONT VIEW (DOORS REMOVED)



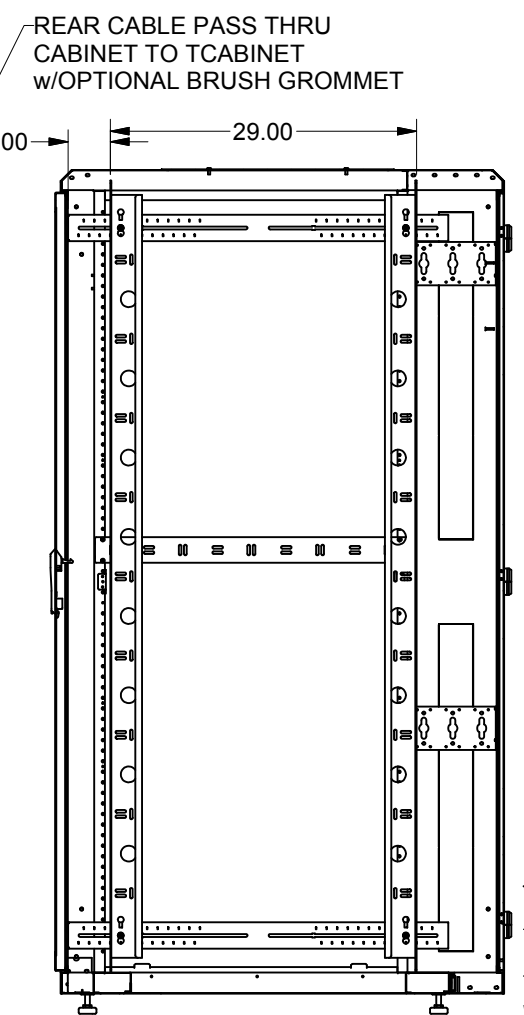
FRONT VIEW

HIEGHT OF CABINET WITH CASTERS OR LEVELERS

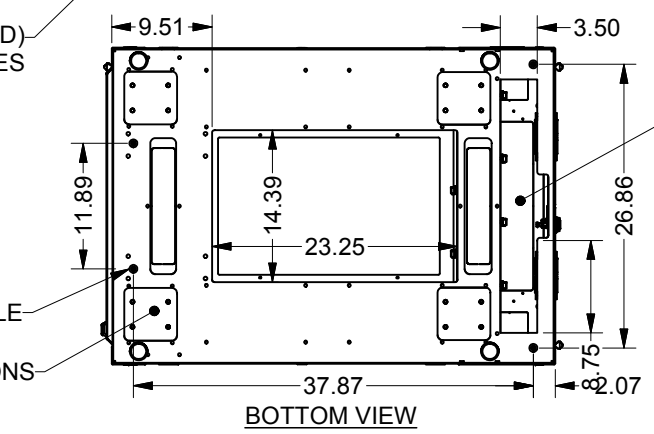
PAIR OF SOLID LIFT OFF SIDE PANELS w/LOCK AND FINGER RELEASE LATCHES



RIGHT SIDE VIEW



SECTION A-A (RIGHT SIDE VIEW)



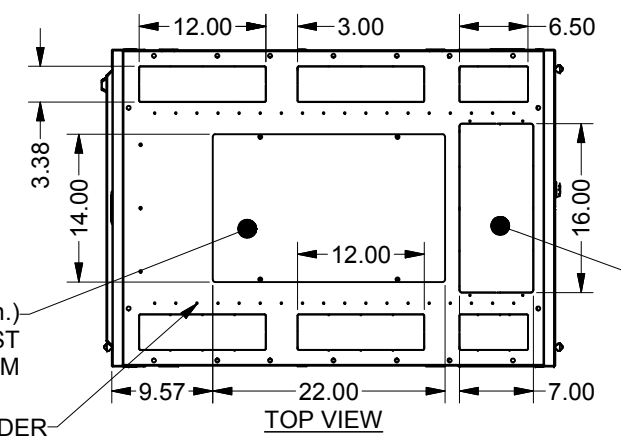
BOTTOM VIEW

Ø0.75" FLOOR MOUNTING HOLE

OPTIONAL CASTER MOUNTING LOCATIONS

LEVELING GLIDES (4 INCLUDED) 1/2-13 UNC THREADED HOLES

MESH CONTOUR DOORS FRONT AND REAR w/EASY LATCH LOCKING HANDLES LIFT OFF & FIELD REVERSIBLE

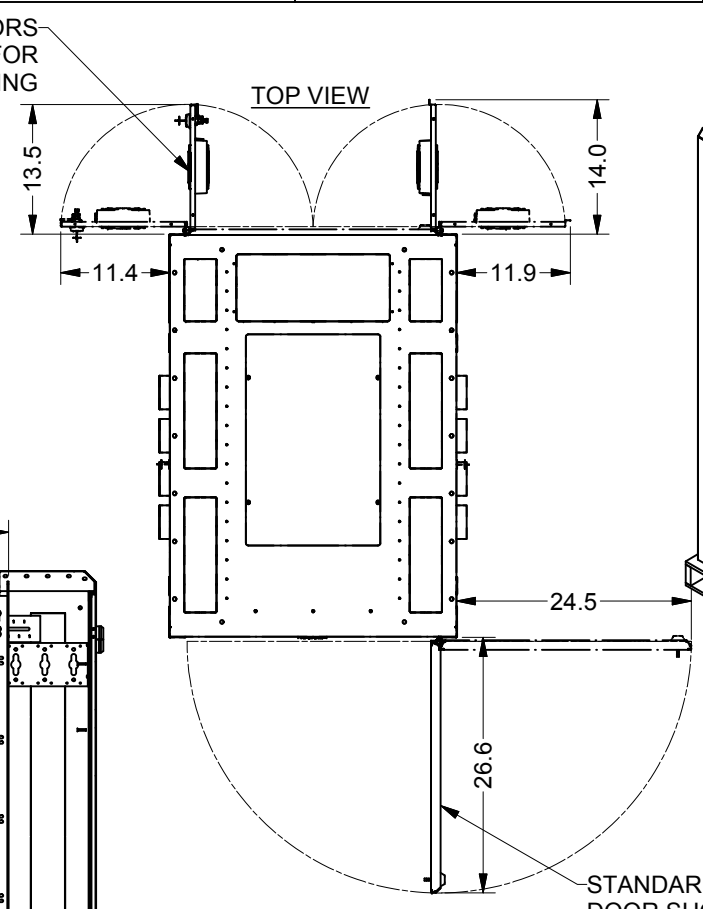


TOP VIEW

OPTIONAL SPLIT FAN DOORS #7803E-SF29 SHOWN FOR REFERENCE 180° DOOR SWING

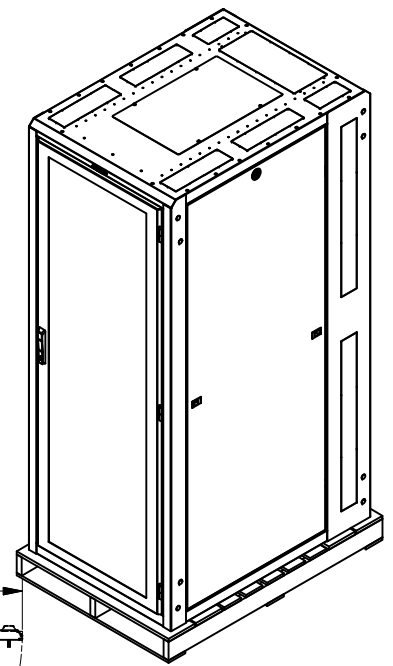
TOP REAR KNOCKOUT FOR CABLE ACCESS (112 sq. in.) OR CHIMNEY EXHAUST

REAR CABLE PASS THRU CABINET TO TCABINET w/OPTIONAL BRUSH GROMMET



TOP VIEW

STANDARD MESH CONTOUR DOOR SHOWN FOR REFERENCE 180° DOOR SWING



SPECIFICATIONS:

DIMENSIONS : 78.0"H (80.0"H w/ OPTIONAL CASTERS) x 30.0"W x 42.0"D

RACK SPACES : 42 RMU w/ NUMBERED RMU INDICATORS, 19" EIA 310-D COMPLIANT.

WEIGHT CAPACITY : 2000 lbs. (BOLTED TO FLOOR, LEVELERS, OR ON CASTERS.)

COLOR : DURABLE TEXTURED BLACK POWDER COATING

CERTIFICATIONS : UL 60950-1 STANDARD FOR I.T. & COMMUNICATIONS EQ., ENCLOSURES.

CONSTRUCTION : 2 PAIR MOUNTING RAILS, #12 GA. C.R.S. FULLY WELDED FRAME, #14 & #12 GA. C.R.S. DOORS, SIDE PANELS, TOP PANEL, #16 C.R.S.

HARDWARE : PACKAGE OF QTY-50; M6 SCREWS AND CAGE NUTS, INCLUDED.

INTERPRET DRAWING PER ASME Y14.5M-1994
 DIMENSIONAL LIMITS APPLY AFTER APPLICATION OF FINISH
 DRAWING NOT TO SCALE
 TOLERANCE UNLESS OTHERWISE NOTED:
 ANGULAR +/- .1°
 .XXXX +/- .010
 .XXX +/- .015
 .XX +/- .030
 X FOR REF. ONLY
 UNLESS OTHERWISE SPECIFIED ALL DIMENSIONS ARE IN INCHES

NOTICE:
 Use of this document is subject to a confidentiality and nondisclosure agreement with Great Lakes Case & Cabinet Co., Inc. (GLCC) and may not be reproduced, disclosed or utilized in whole or in part without prior written authorization from GLCC.

PART NUMBER:	GL780ES-3042MS
QTY PER UNIT:	1
MATERIAL TYPE:	
MATERIAL GAUGE:	
FINISH:	
DRAWING DATE:	9-24-07
CHECKED:	WSS
DATE:	9-24-07

TITLE	ENHANCED SERVER ENCL., 42 RMU, 19" EIA EIA
<small>P.O. BOX 551 EDINBORO, PA 16412 PHONE (814) 734-7303 FAX (814) 734-3907 E-MAIL: glcc@greatcabinets.com</small>	
DWG NO:	GL780ES-3042MS
REV	1
SHEET	1 OF 1

