

TOP DESIGNED FOR VARIETY OR REMOVABLE TOP PANELS

12 GAUGE MOUNTING RAILS  
 - 37 RMU, 19" 310-D COMPLIANT  
 - 0.375" SQ CAGE NUT (STANDARD)  
 - OPTIONAL RAILS TAPPED #10/32

1.50" DIA. CABLE PASS THROUGH HOLES

CABLE TIE-DOWN SLOTS

RAILS ARE FULLY ADJUSTABLE FRONT-TO-REAR

NETWORK / GANGING HOLES

10/32 x 1.5" COPPER PLATED GROUNDING STUD, QTY (3)

DOORS CAN BE EITHER RIGHT OR LEFT-HAND HINGED

### Enhanced Series Enclosure Features

- 37 RMU, 19" EIA 310-D Compliant
- Fully Welded Steel Construction #16 Gauge Steel
- Universal M6 Cage Nut Rails Standard (10/32 Tapped Rails Available) #12 Gauge Steel
- Rack Mounting Hardware Included
- Rails are Infinitely Adjustable, Front to Rear (Max. Rail Spacing is Cabinet Depth minus 2 inches)
- Rails with RMU Markings
- TRC (True Rail Count) Rails  
This certifies that the number of RMU are true and all accessible within the door opening.
- Total of Three 10/32 x 1.5" Copper Plated Grounding Studs (One in bottom, two in top)
- Weight Capacity: 1500 lbs. on levelers, bolted to floor, or on heavy duty casters
- Durable Powder Coat Finish
- Field Reversible Door Hinges (No Additional Hardware Required)
- Optional Features:
  - Cable Lacing Bars
  - Ganging Hardware (No Tools Required)
  - Anti-tip Legs
  - Variety of Top, Bottom, & Side Panels

INTERPRET DRAWING PER ASME Y14.5M-1994
DIMENSIONAL LIMITS APPLY AFTER APPLICATION OF FINISH
DRAWING NOT TO SCALE
TOLERANCE UNLESS OTHERWISE NOTED:
ANGULAR +/- 1-
.XXXX +/- .010
.XXX +/- .015
.XX +/- .030
.X FOR REF. ONLY

#### NOTICE:

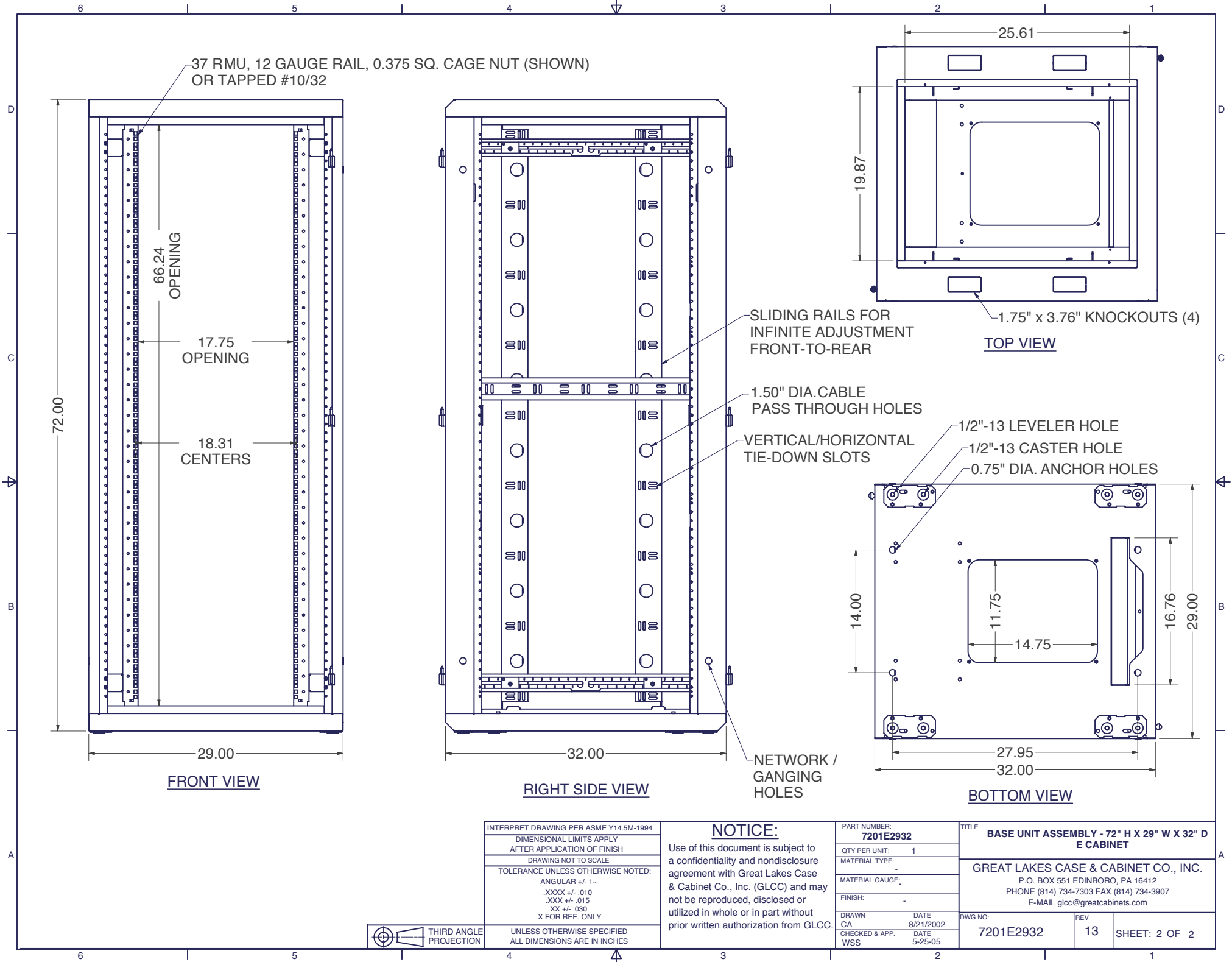
Use of this document is subject to a confidentiality and nondisclosure agreement with Great Lakes Case & Cabinet Co., Inc. (GLCC) and may not be reproduced, disclosed or utilized in whole or in part without prior written authorization from GLCC.

PART NUMBER:	7201E2932
QTY PER UNIT:	1
MATERIAL TYPE:	-
MATERIAL GAUGE:	-
FINISH:	-
DRAWN	DATE
CA	8/21/2002
CHECKED & APP.	DATE
WSS	5-25-05

TITLE	BASE UNIT ASSEMBLY - 72" H X 29" W X 32" D E CABINET		
GREAT LAKES CASE & CABINET CO., INC.			
P.O. BOX 551 EDINBORO, PA 16412			
PHONE (814) 734-7303 FAX (814) 734-3907			
E-MAIL glcc@greatcabinets.com			
DWG NO:	REV	SHEET: 1 OF 2	
7201E2932	13		



UNLESS OTHERWISE SPECIFIED ALL DIMENSIONS ARE IN INCHES



INTERPRET DRAWING PER ASME Y14.5M-1994
DIMENSIONAL LIMITS APPLY AFTER APPLICATION OF FINISH
DRAWING NOT TO SCALE
TOLERANCE UNLESS OTHERWISE NOTED:
ANGULAR +/- 1°
.XXXX +/- .010
.XXX +/- .015
.XX +/- .030
.X FOR REF. ONLY
UNLESS OTHERWISE SPECIFIED ALL DIMENSIONS ARE IN INCHES

**NOTICE:**  
Use of this document is subject to a confidentiality and nondisclosure agreement with Great Lakes Case & Cabinet Co., Inc. (GLCC) and may not be reproduced, disclosed or utilized in whole or in part without prior written authorization from GLCC.

PART NUMBER: <b>7201E2932</b>	
QTY PER UNIT: 1	
MATERIAL TYPE: -	
MATERIAL GAUGE: -	
FINISH: -	
DRAWN: CA	DATE: 8/21/2002
CHECKED & APP. WSS	DATE: 5-25-05

TITLE <b>BASE UNIT ASSEMBLY - 72" H X 29" W X 32" D E CABINET</b>		
GREAT LAKES CASE & CABINET CO., INC. P.O. BOX 551 EDINBORO, PA 16412 PHONE (814) 734-7303 FAX (814) 734-3907 E-MAIL glcc@greatcabineets.com		
DWG NO: <b>7201E2932</b>	REV <b>13</b>	SHEET: 2 OF 2

