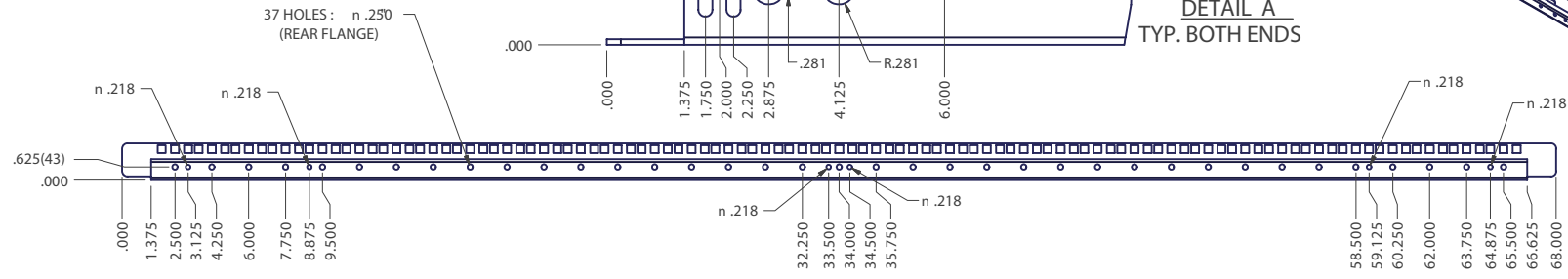
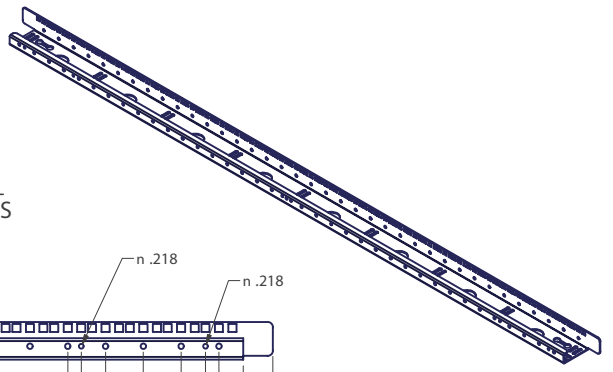
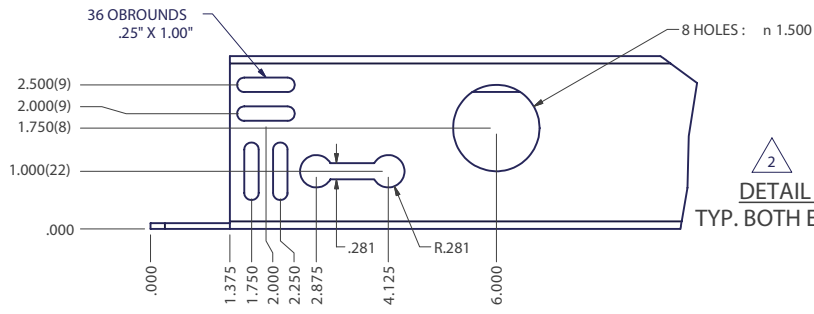
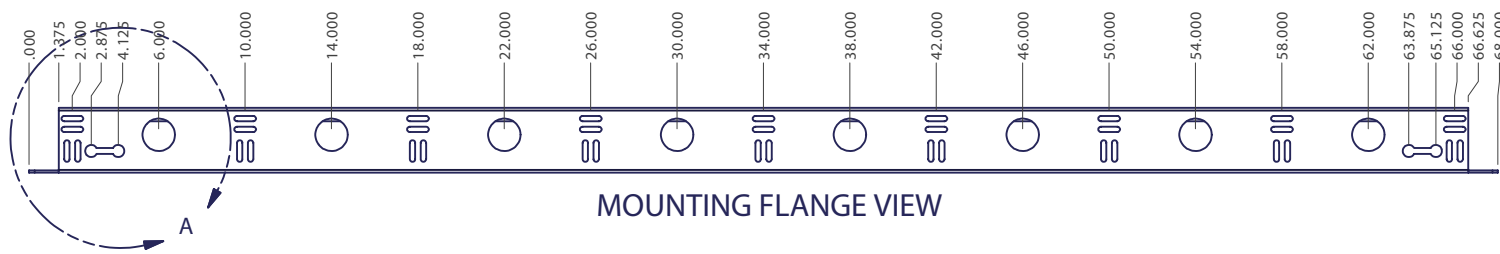


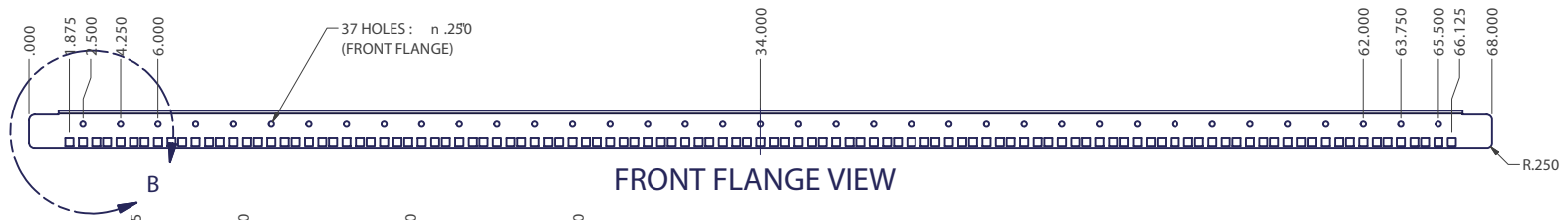
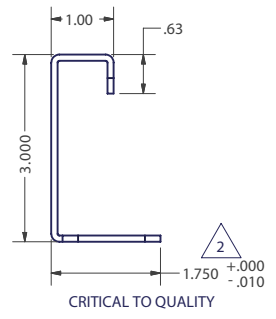
REVISION HISTORY			
REV	DESCRIPTION	DATE	APPROVED
2	ECO-01271	9/18/2003	WSS



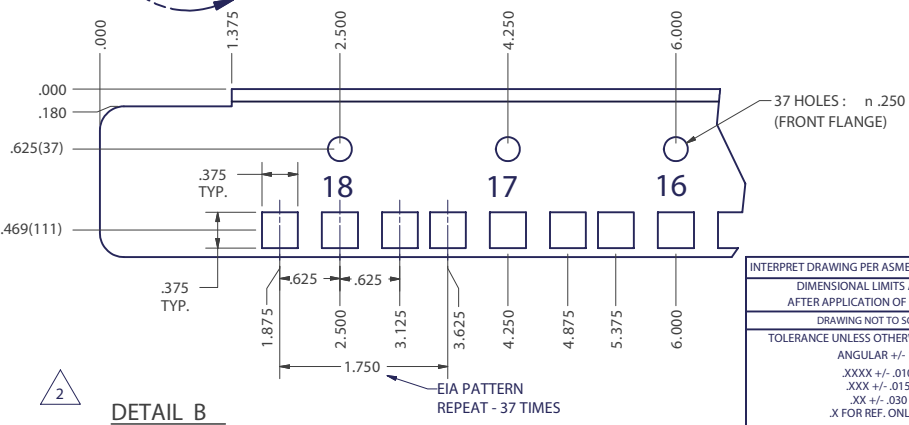
REAR FLANGE VIEW



MOUNTING FLANGE VIEW



FRONT FLANGE VIEW



DETAIL B
TYP. BOTH ENDS

NOTES:

- REFER TO PURCHASE ORDER - SPECIAL INSTRUCTIONS MAY APPLY.
- NUMBERS TO BE STAMPED INTO FACE OF RAIL, INCREMENT FROM "0" AT MIDPOINT OF RAIL TO "18" AT EACH END OF RAIL AND MUST BE LEGIBLE AFTER FINISH IS APPLIED.
- FINISH PER TD-09-103 (POWDER COAT) CLASS B, TEXTURE LEVEL 3 - ALL SURFACES UNLESS OTHERWISE NOTED.
- DIMENSIONS SHOWN ARE PRIOR TO APPLICATION OF FINISH.

NOTICE:

Use of this document is subject to a confidentiality and nondisclosure agreement with Great Lakes Case & Cabinet Co., Inc. (GLCC) and may not be reproduced, disclosed or utilized in whole or in part without prior written authorization from GLCC.

INTERPRET DRAWING PER ASME Y14.5M-1994
DIMENSIONAL LIMITS APPLY AFTER APPLICATION OF FINISH
DRAWING NOT TO SCALE
TOLERANCE UNLESS OTHERWISE NOTED: ANGULAR +/- 1° .XXX +/- .010 .XXX +/- .015 .XX +/- .030 X FOR REF. ONLY
UNLESS OTHERWISE SPECIFIED ALL DIMENSIONS ARE IN INCHES

PART NUMBER: 7205E52	
QTY PER UNIT: 1	
MATERIAL TYPE: C.R.S.	
MATERIAL GAUGE: #12 GA.	
FINISH: SEE NOTES	
DRAWN WSS	DATE 9/17/2003
CHECKED & APP. C.A.	DATE 9/18/03

TITLE ENHANCED RAIL, FOR 72" HIGH ENCLOSURE, 3/8" SQUARE HOLE MOUNTING HOLES	
GREAT LAKES CASE & CABINET CO., INC. P.O. BOX 551 EDINBORO, PA 16412 PHONE (814) 734-7303 FAX (814) 734-3907 E-MAIL glcc@greatcabinets.com	
DWG NO: 1000600	REV 2
SHEET: 1 OF 1	

