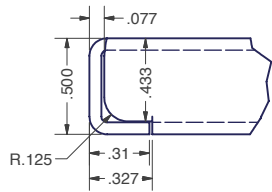
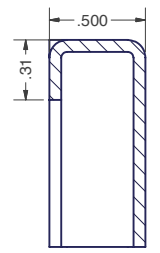
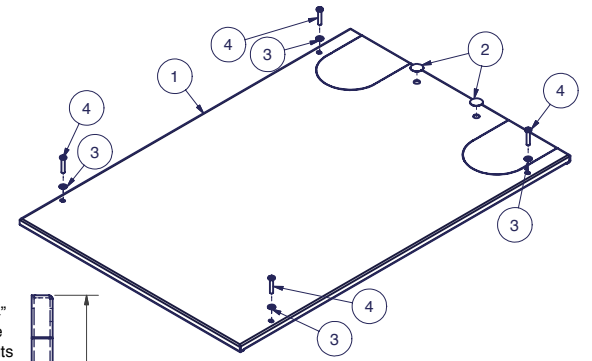
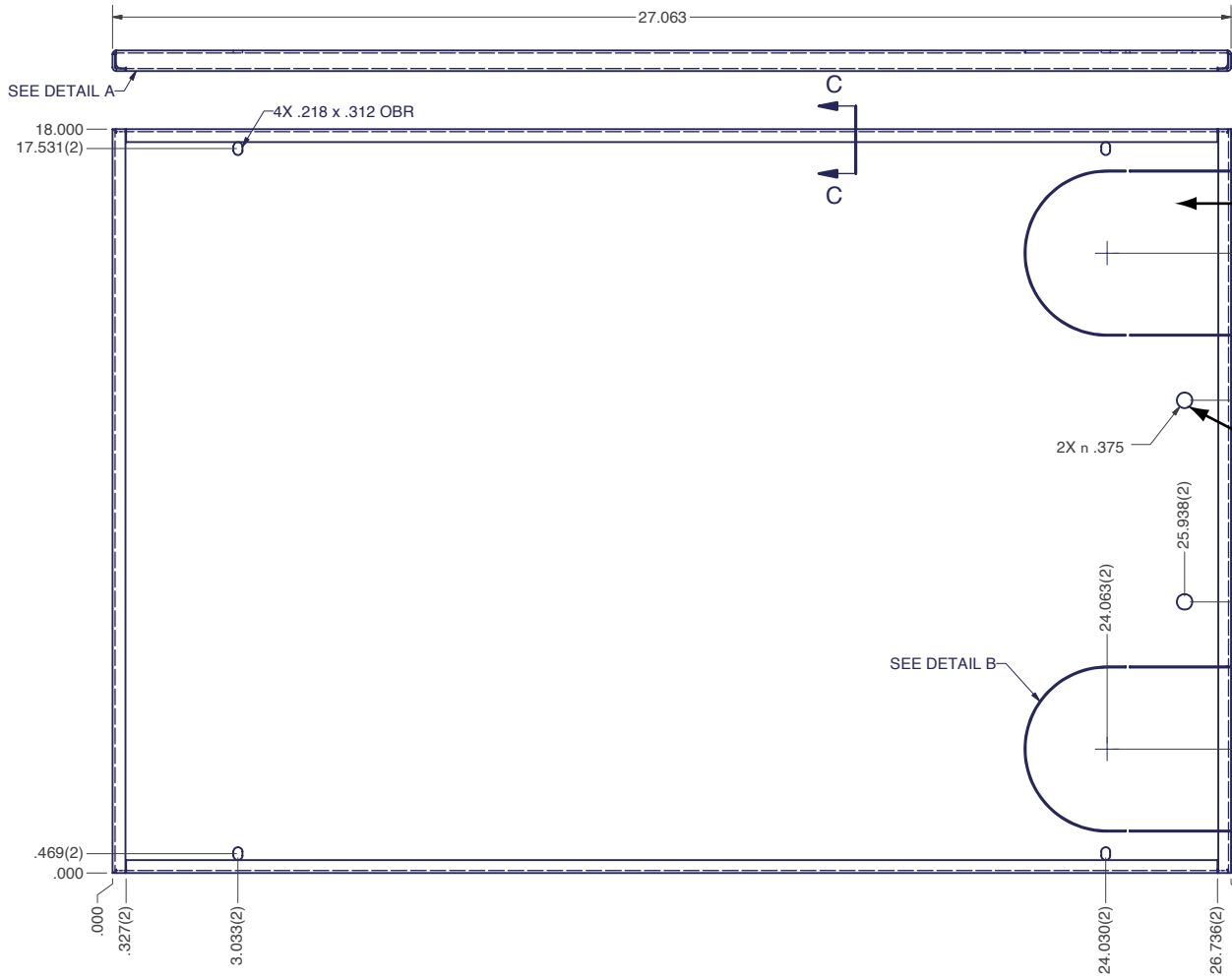


COMPLETE REDESIGN

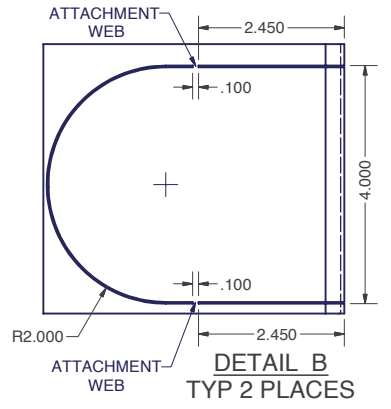


DETAIL A
TYP 4 CORNERS

| Bill of Material | | | | | |
|------------------|----------------|-----|--|--------------------|----------|
| ITEM | PART NUMBER | QTY | DESCRIPTION | FILE NAME | REVISION |
| 1 | - | 1 | 24" WIDE ENHANCED SOLID TOP PANEL | I000215.ipt | 7 |
| 2 | BPF375 | 2 | BUTTON PLUG, FLUSH TYPE - BLACK | BPF375.ipt | - |
| 3 | 17W04379B | 4 | BLACK NYLON WASHER (.196 DIA x .437 DIA) | 17W04379B.ipt | - |
| 4 | SCR1032X1BLK23 | 4 | #10-32 x 1" L PAN HEAD PHIL TYPE 23, BLACK | SCR1032X1BLK23.ipt | - |



SECTION C-C
TYP 4 SIDES



DETAIL B
TYP 2 PLACES

Note: Durable Powder Coat Finish

| | |
|---|--|
| <p>INTERPRET DRAWING PER ASME Y14.5M-1994</p> <p>DIMENSIONAL LIMITS APPLY AFTER APPLICATION OF FINISH</p> <p>DRAWING NOT TO SCALE</p> <p>TOLERANCE UNLESS OTHERWISE NOTED:</p> <p>ANGULAR +/- 1-</p> <p>.XXXX +/- .010</p> <p>.XXX +/- .015</p> <p>.XX +/- .030</p> <p>.X FOR REF. ONLY</p> | <p>UNLESS OTHERWISE SPECIFIED ALL DIMENSIONS ARE IN INCHES</p> |
|---|--|

NOTICE:

Use of this document is subject to a confidentiality and nondisclosure agreement with Great Lakes Case & Cabinet Co., Inc. (GLCC) and may not be reproduced, disclosed or utilized in whole or in part without prior written authorization from GLCC.

| | |
|-----------------|-----------|
| PART NUMBER: | TPE24S |
| QTY PER UNIT: | 1 |
| MATERIAL TYPE: | CRS |
| MATERIAL GAUGE: | 16 GA |
| FINISH: | SEE NOTES |
| DRAWN | DATE |
| CA | 2/26/2003 |
| CHECKED & APP. | DATE |
| AL | 2-27-03 |

| | | | |
|---|-----------------------------------|-----|---|
| TITLE | 24" WIDE ENHANCED SOLID TOP PANEL | | |
| GREAT LAKES CASE & CABINET CO., INC. | | | |
| P.O. BOX 551 EDINBORO, PA 16412 | | | |
| PHONE (814) 734-7303 FAX (814) 734-3907 | | | |
| E-MAIL glcc@greatcabinets.com | | | |
| DWG NO: | I000215 | REV | 7 |
| SHEET: 1 OF 1 | | | |



THIRD ANGLE PROJECTION