



# product spotlight

## NEMA 12K ENCLOSURE



NEMA 12K Free Standing Enclosures are constructed to be compliant with the National Electrical Manufacturers Association's Type 12 standard. NEMA 12K enclosures are intended for indoor use to provide a degree of protection to the equipment inside the enclosure against dust, falling dirt, water and noncorrosive liquids.

### FEATURES

- 19" EIA 310-E Compliant Mounting
- 3/8" SQ. (M6) 45 RMU mounting rails with RMU labels
- 2000 lb. weight capacity
- Removable side panels
- Solid side panels and AC unit panels available
  - Side Panel "A" will accept the following AC units: GL2500V, GL3500V, GL4500V, and GL6000V
  - Side Panel "B" will accept the following AC units: GL8000VHA, GL10000V, and GL12000V
  - Side Panel "C" will accept the following AC units: GL14000V, GL17000V, and GL20000V
- AC Side panels are configured with an internal baffle kit to direct hot and cold air
- Optional Fan Assemblies and exhaust filters
- Two vertical lacing bars (one in each rear corner)
- Heavy duty hinges and handles
- Cable access knockouts on bottom inside of enclosure

PART NO.	H	W	D	SIDE PANEL CONFIGURATION
GL840N12-2442-SS	84"	24"	42"	Two solid sides with no AC openings
GL840N12-2442-SA	84"	24"	42"	One solid side and AC side panel "A"
GL840N12-2442-SB	84"	24"	42"	One solid side and AC side panel "B"
GL840N12-2442-SC	84"	24"	42"	One solid side and AC side panel "C"
GL840N12-3042-SS	84"	30"	42"	Two solid sides with no AC openings
GL840N12-3042-SA	84"	30"	42"	One solid side and AC side panel "A"
GL840N12-3042-SB	84"	30"	42"	One solid side and AC side panel "B"
GL840N12-3042-SC	84"	30"	42"	One solid side and AC side panel "C"

NOTE: Previous model of NEMA 12 Enclosure (Part No. GL840N12-2442) no longer available.

# ICE QUBE AC UNIT

## PART NO. DESCRIPTION

GL2500V	For use with side panel "A", 120V, 2500 BTU, 7.3 amps
GL3500V	For use with side panel "A", 120V, 3500 BTU, 8.2 amps
GL4500V	For use with side panel "A", 120V, 4500 BTU, 9.5 amps
GL6000V	For use with side panel "A", 120V, 6000 BTU, 10.9 amps
GL8000VHA	For use with side panel "B", designed for high ambient applications, 120V, 8000 BTU, 14.7 amps
GL10000V	For use with side panel "B", 120V, 10,000 BTU, 15.1 amps
GL12000V	For use with side panel "B", 120V, 12,000 BTU, 19.6 amps
GL14000V	For use with side panel "C", 230V, 14,000 BTU, 15.0/16.5 amps
GL17000V	For use with side panel "C", 230V, 17,000 BTU, 15.5/17.1 amps
GL20000V	For use with side panel "C", 230V, 20,000 BTU, 18.2/20 amps



Optional Ice Qube Vertical Mount AC Unit; installs by removing two gland plates from enclosure

Note: Each ice Qube AC Unit is UL Listed and has a digital temperature controller with alarm, built in condensate evaporator, and contains CFC-free refrigerant. Ice Qube AC Units are warranted by Ice Qube for a period of 1 year from invoice date.

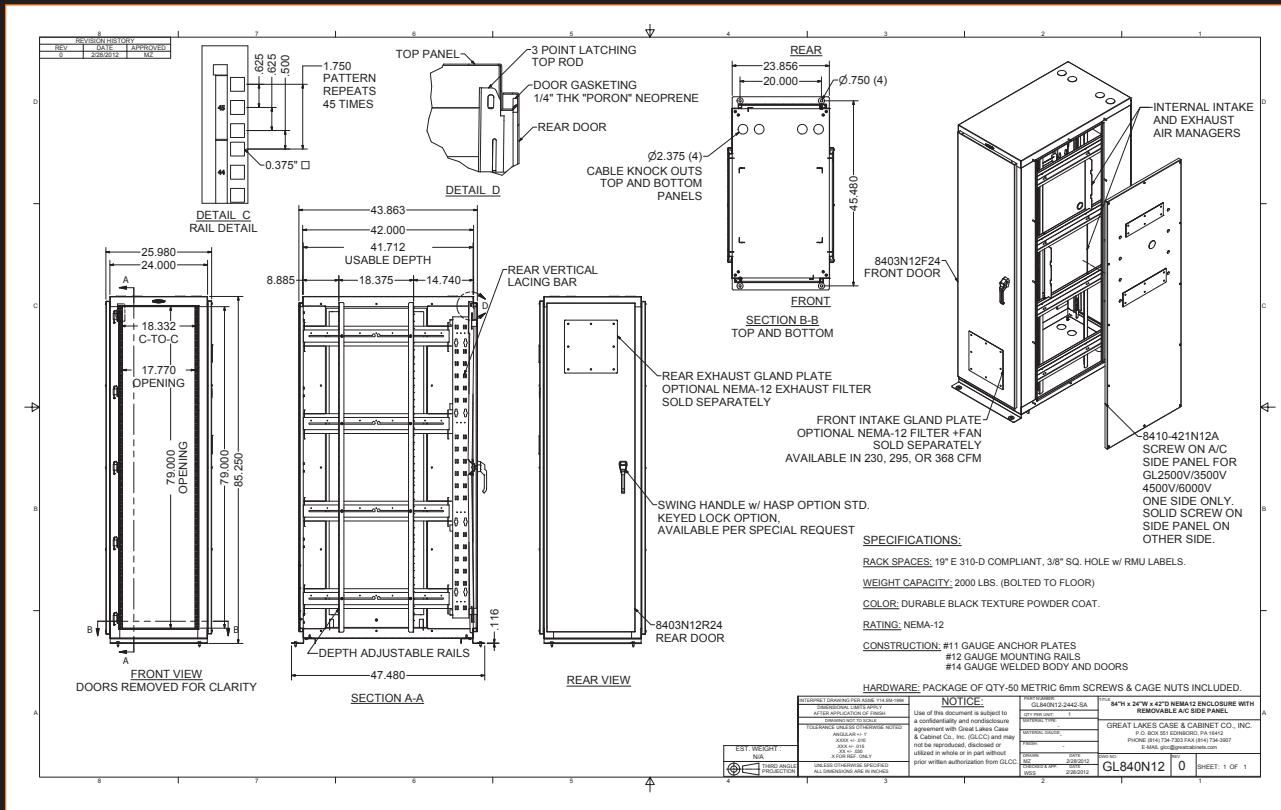
# FAN ASSEMBLY AND FILTERS

## PART NO. DESCRIPTION

FFKN12-A1	Fan Assembly (includes filter) and exhaust filter, 230 CFM, 115V
FFKN12-A2	Fan Assembly (includes filter) and exhaust filter, 295 CFM, 115V
FFKN12-A3	Fan Assembly (includes filter) and exhaust filter, 368 CFM, 115V
FILTER-09	Package of five replacement filters for fan kits



Optional Fan Assembly (includes filter)



WeRackYourWorld.com

### CORPORATE HEADQUARTERS

P.O. Box 551  
Edinboro, PA 16412  
Phone: 1.866.TRY.GLCC  
(1.866.879.4522)  
Phone: 814.734.7303  
Fax: 814.734.3907  
glcc@greatcabinets.com

### GREAT LAKES MANUFACTURING, INC.

1521 Enterprise Road  
Corry, PA 16407  
Phone: 814.734.2436  
Fax: 814.665.7025  
glm@greatmanufacturing.net

### WESTERN DISTRIBUTION

4750 Joule Street  
Reno, NV 89502  
Phone: 775.829.9913  
Fax: 775.829.9926  
glcc@greatcabinets.com

### SOUTHEAST DISTRIBUTION

3630 Shaw Blvd.  
Suite 4, Naples, FL 34117  
Phone: 1.866.TRY.GLCC  
Fax: 239.304.1226  
glcc@greatcabinets.com

### GREAT LAKES INTERNATIONAL LTD.

Aerbridge House, Unit 14  
Dunshaughlin Business Park  
Dunshaughlin Co. Meath  
Ireland  
Phone: 011 353 1 825 8777  
Fax: 011 353 1 825 8778  
glcc@greatcabinets.com

### GREAT LAKES HUNGARY KFT

Zsúrló utca 13  
8000 Székesfehérvár  
Hungary  
Phone: 011 36 22 880 420  
Fax: 011 36 22 880 429  
glcc@greatcabinets.com