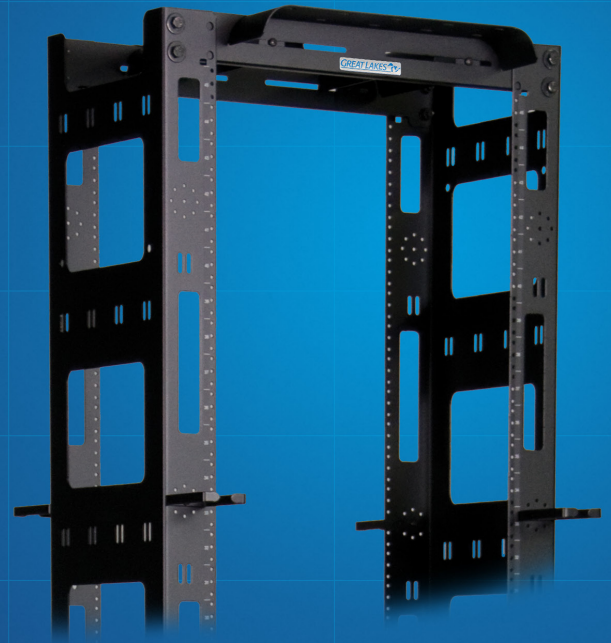


CMR-45U CABLE MANAGEMENT



The CMR-45U from GLCC® is a cable management rack—providing open access to switch and patch panels—that makes installation and maintenance of network applications fast and simple. Vertical cable managers ranging from 5" to 12" are compatible with the rack, making it capable of supporting small to large installations.

In stock and able to ship within
24-48 hours after receipt of order.



- #12-24 tapped channels (with RMU labels) for 19" and 23" mounting
- 12"D channels (tapped front and rear) able to support heavier and deeper switch equipment
- Top front and rear waterfall brackets help maintain proper cable bend radius
- Top waterfall brackets between channels are adjustable to support overhead cables
- Large channel openings support side-to-side airflow and allow cable pass-thru
- Removable cable rings can be installed in multiple locations along the channel
- Compatible with brackets that support overhead cable tray or ladder rack
- UL2416 Listed, RoHS II Compliant
- Country of Origin, Made in the USA