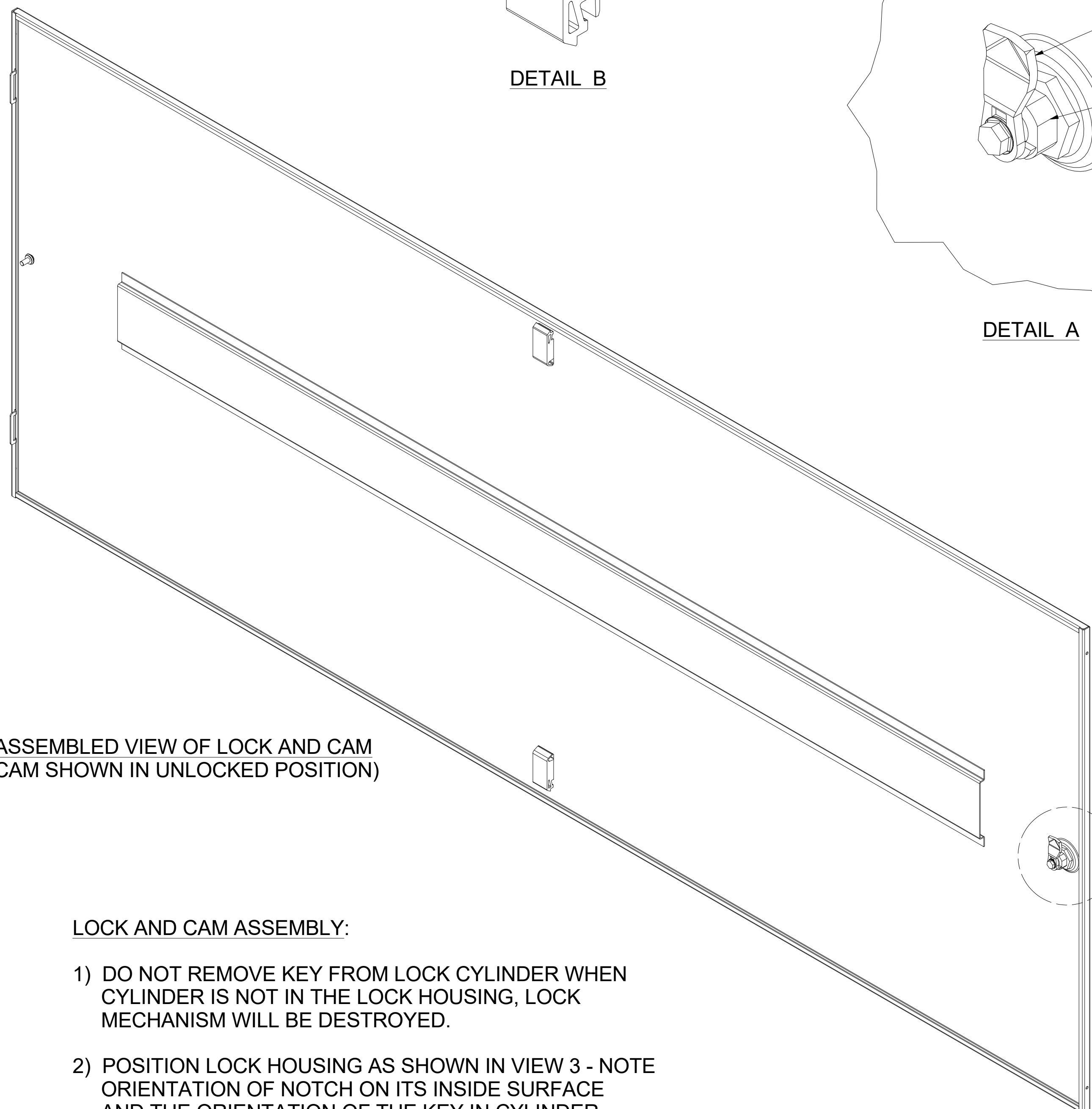


REVISION HISTORY			
REV	DESCRIPTION	DATE	APPROVED
0	ECO-06082	11/26/13	CND
1	ECO-06086	2/27/2014	CDM
2	ECO-06648	7/31/2015	WSS
3	ECO-07050	1/24/2017	VL

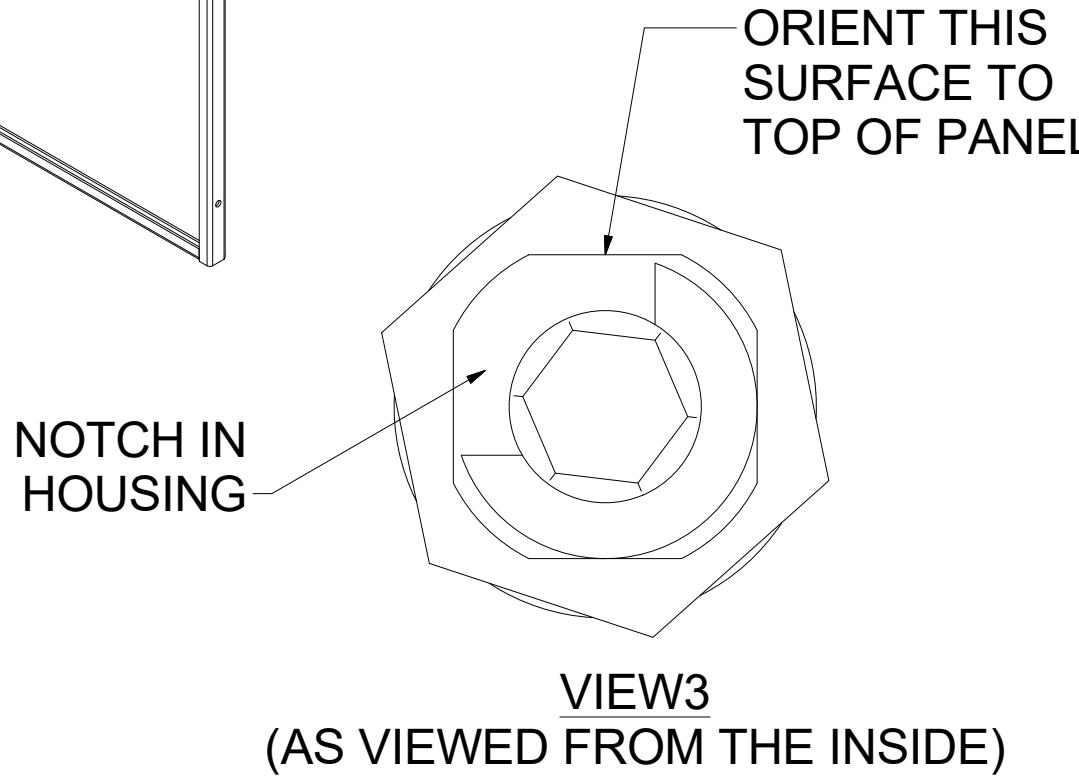
Bill of Material						
ITEM	PART NUMBER	STOCK NU	QTY	DESCRIPTION	FILE NAME	REV
1	I020487		1	SOLID, LIFT-OFF SIDE PANEL FOR 79"H x 36"D E CABINET - WELDMNT	I020487.iam	3
2		H19-037	1	Austin 10117-32728 Black Lock, or PENN, KEY 1333	10117-32728.iam	-
3		H17-010	1	CAM 2000614 P/N R050-1445 ZN 35 MM DIRAK	2000614.ipt	-
4	A34062512	H19-007	2	SOUTHCO SLIDE LATCH, FLUSH	A34062512.ipt	-



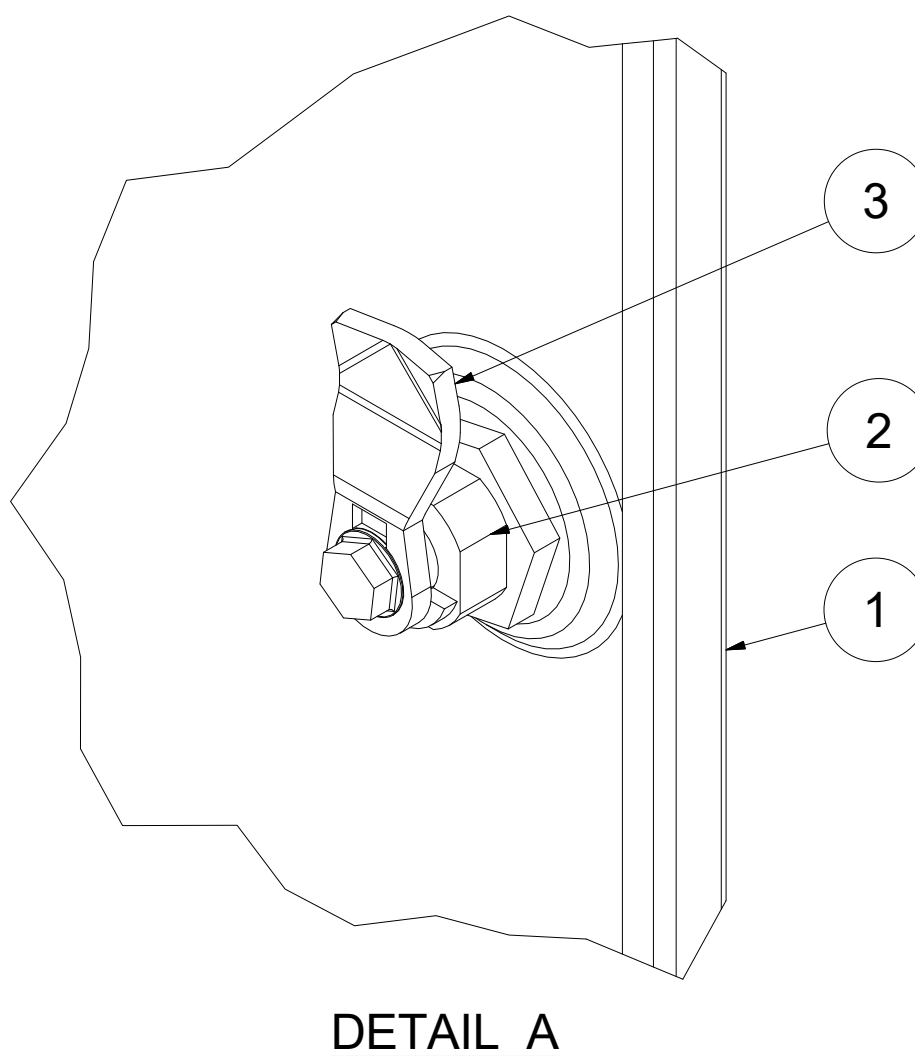
ASSEMBLED VIEW OF LOCK AND CAM
(CAM SHOWN IN UNLOCKED POSITION)

LOCK AND CAM ASSEMBLY:

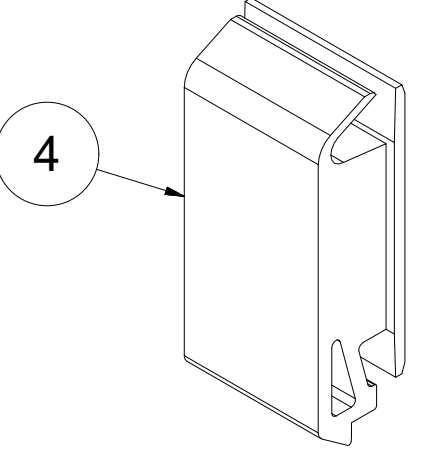
- 1) DO NOT REMOVE KEY FROM LOCK CYLINDER WHEN CYLINDER IS NOT IN THE LOCK HOUSING, LOCK MECHANISM WILL BE DESTROYED.
- 2) POSITION LOCK HOUSING AS SHOWN IN VIEW 3 - NOTE ORIENTATION OF NOTCH ON ITS INSIDE SURFACE AND THE ORIENTATION OF THE KEY IN CYLINDER.
- 3) SECURE LOCK HOUSING WITH NUT.
- 4) POSITION CAM AS SHOWN AND SECURE WITH SCREW.
- 5) TURN KEY TO VERIFY SMOOTH OPERATION OF LOCK.



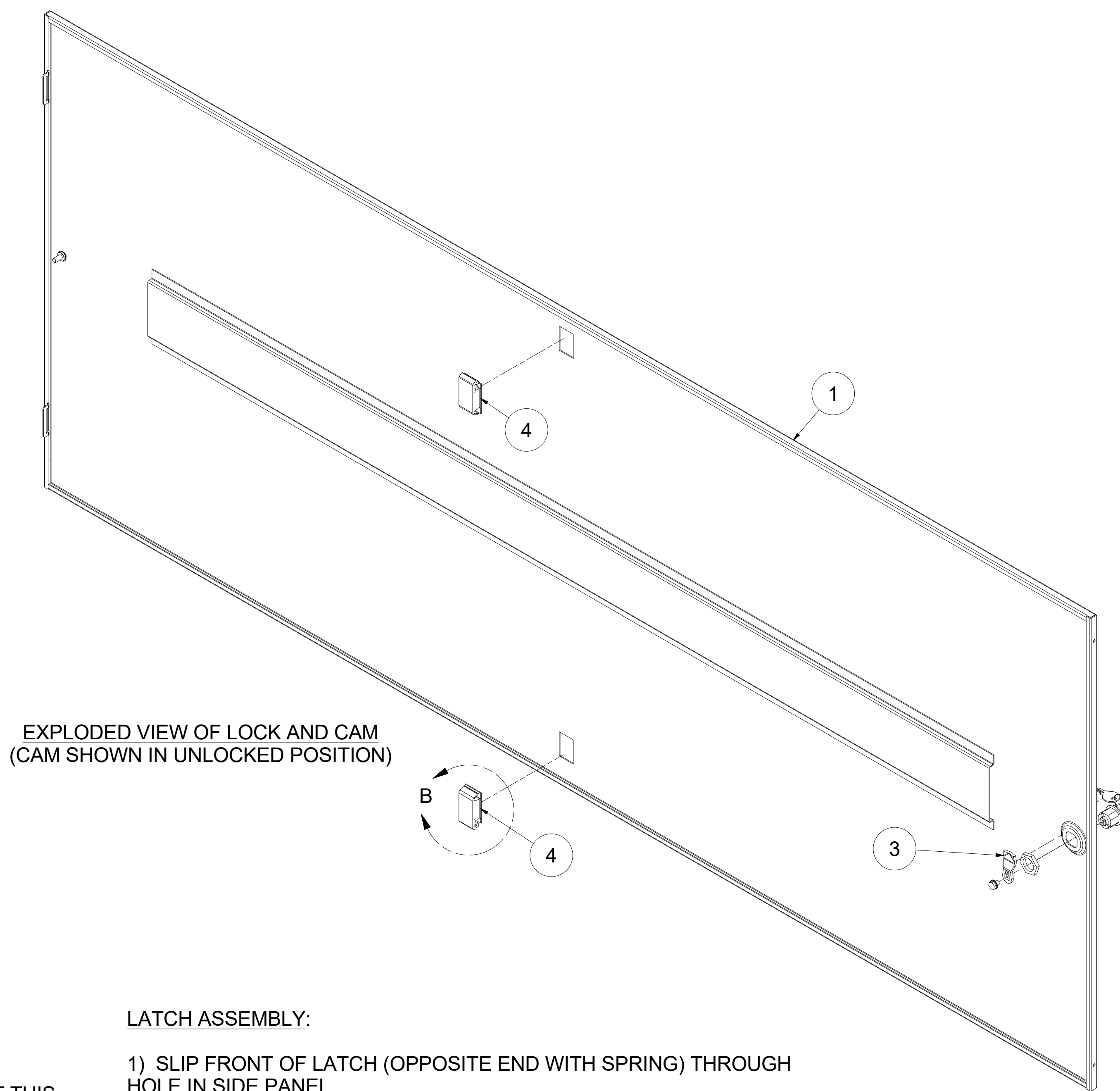
VIEW3
(AS VIEWED FROM THE INSIDE)



DETAIL A



DETAIL B



EXPLODED VIEW OF LOCK AND CAM
(CAM SHOWN IN UNLOCKED POSITION)

LATCH ASSEMBLY:

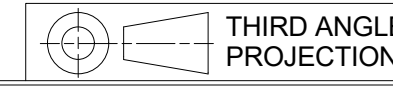
- 1) SLIP FRONT OF LATCH (OPPOSITE END WITH SPRING) THROUGH HOLE IN SIDE PANEL.
- 2) SNAP BACK END OF LATCH INTO POSITION.
- 3) LATCH MUST TRAVEL FREELY ONCE INSTALLED - PULL LATCH BACK AGAINST ITS SPRING AND RELEASE. LATCH MUST TRAVEL BACK 1/4" UNDER ITS OWN SPRING TENSION.

INTERPRET DRAWING PER ASME Y14.5M-1994
DIMENSIONAL LIMITS APPLY AFTER APPLICATION OF FINISH
DRAWING NOT TO SCALE
TOLERANCE UNLESS OTHERWISE NOTED:
ANGULAR +/- 1°
.XXXX +/- .010
.XXX +/- .015
.XX +/- .030
.X FOR REF. ONLY
UNLESS OTHERWISE SPECIFIED ALL DIMENSIONS ARE IN INCHES

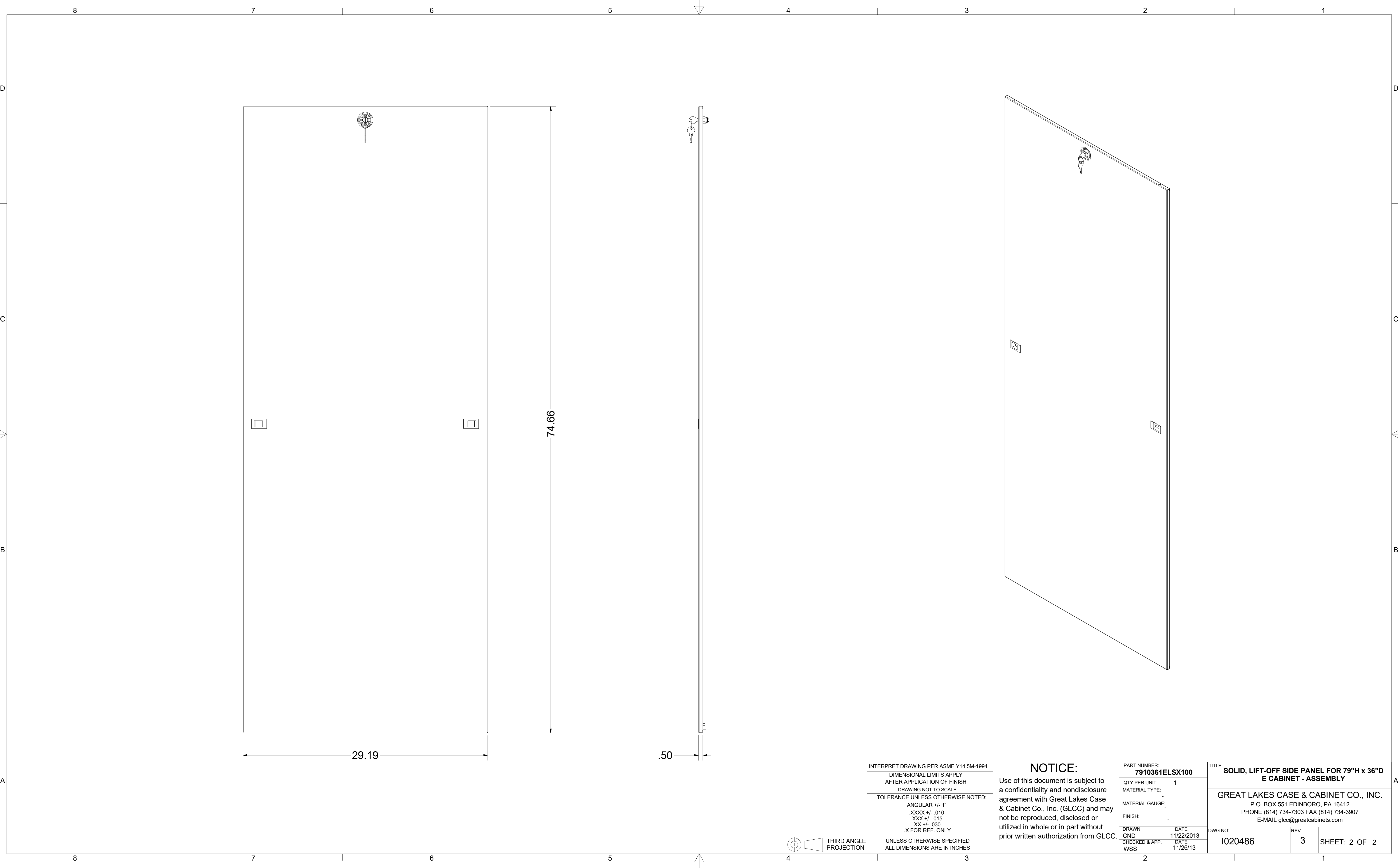
NOTICE:
Use of this document is subject to a confidentiality and nondisclosure agreement with Great Lakes Case & Cabinet Co., Inc. (GLCC) and may not be reproduced, disclosed or utilized in whole or in part without prior written authorization from GLCC.

PART NUMBER: 7910361ELSX100	
QTY PER UNIT: 1	
MATERIAL TYPE: -	
MATERIAL GAUGE: -	
FINISH: -	
DRAWN CND	DATE 11/22/2013
CHECKED & APP. WSS	DATE 11/26/13

TITLE SOLID, LIFT-OFF SIDE PANEL FOR 79"H x 36"D E CABINET - ASSEMBLY		
GREAT LAKES CASE & CABINET CO., INC. P.O. BOX 551 EDINBORO, PA 16412 PHONE (814) 734-7303 FAX (814) 734-3907 E-MAIL glcc@greatcabinets.com		
DWG NO: 1020486	REV 3	SHEET: 1 OF 2



THIRD ANGLE PROJECTION



INTERPRET DRAWING PER ASME Y14.5M-1994
 DIMENSIONAL LIMITS APPLY
 AFTER APPLICATION OF FINISH
 DRAWING NOT TO SCALE
 TOLERANCE UNLESS OTHERWISE NOTED:
 ANGULAR +/- .1°
 .XXXX +/- .010
 .XXX +/- .015
 .XX +/- .030
 .X FOR REF. ONLY
 UNLESS OTHERWISE SPECIFIED
 ALL DIMENSIONS ARE IN INCHES

NOTICE:
 Use of this document is subject to a confidentiality and nondisclosure agreement with Great Lakes Case & Cabinet Co., Inc. (GLCC) and may not be reproduced, disclosed or utilized in whole or in part without prior written authorization from GLCC.

PART NUMBER:
7910361ELSX100
 QTY PER UNIT: 1
 MATERIAL TYPE:
 -
 MATERIAL GAUGE:
 -
 FINISH:
 -
 DRAWN: CND DATE: 11/22/2013
 CHECKED & APP.: WSS DATE: 11/26/13

TITLE: **SOLID, LIFT-OFF SIDE PANEL FOR 79"H x 36"D E CABINET - ASSEMBLY**
GREAT LAKES CASE & CABINET CO., INC.
 P.O. BOX 551 EDINBORO, PA 16412
 PHONE (814) 734-7303 FAX (814) 734-3907
 E-MAIL glcc@greatcabinets.com
 DWG NO: **1020486** REV: **3** SHEET: 2 OF 2

