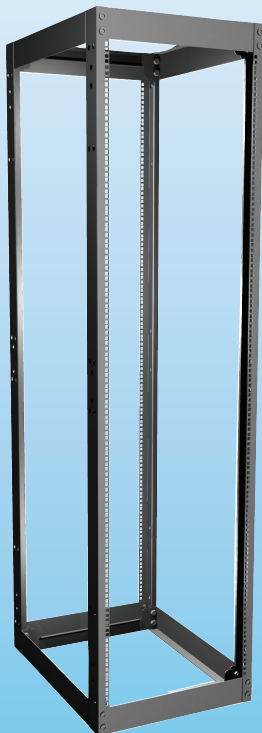


# product spotlight

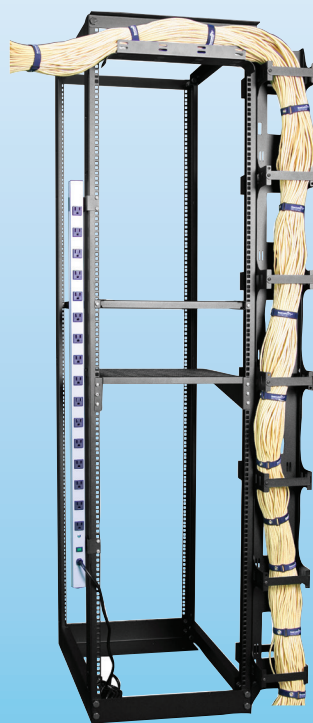
## RACKS

Part No.	Description
4PHD29	Heavy Duty Four Post Rack, 80.50"H x 20.60"W x 29.00"D, 42 RMU
4P1224-29	4 Post Rack with #12-24 mounting, 84.00"H x 20.60"W x 29.00"D, 45 RMU
4PM6-29	4 Post Rack with M6 mounting, 84.00"H x 20.60"W x 29.00"D, 45 RMU
CMR-45U	Cable Management Rack, 84.00"H x 24.00"W x 21.00"D, 45 RMU
GLRR-1984BA	2 Post Rack, 84.00"H x 20.31"W x 14.00"D, 45 RMU, black anodized finish
GLRR-1984	2 Post Rack, 84.00"H x 20.31"W x 14.00"D, 45 RMU, silver anodized finish

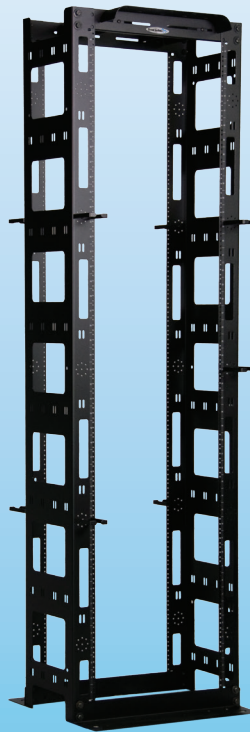
More details on reverse side of this Product Spotlight.



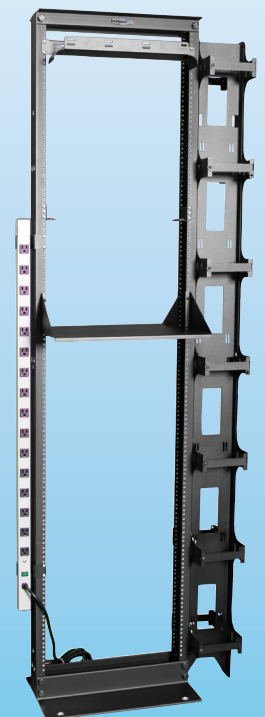
4PHD29



4PM6-29



CMR-45U



GLRR-1984BA

## 4PHD29

**Dimensions:** 80.50"H x 20.6"W x 29.00"D • 42 RMU • Weight Capacity: 2000 lbs. (750 on casters)

**Features:**

- 19" EIA 310-E Compliant
- Universal M6 Cage Nut Mounting
- Equipment mounting hardware included (50 x M6 Cage Nuts & Screws)
- Ganging with 2 post racks possible
- Available with casters

---

## 4P1224-29

**Dimensions:** 84.00"H x 20.60"W x 29.00"D • 45 RMU • Weight Capacity: 1500 lbs.

**Features:**

- 19" EIA 310-E Compliant; 23" mounting available
- Aluminum upright construction and steel bracket set
- Equipment mounting hardware included
- Visit [werackyourworld.com](http://werackyourworld.com) for additional sizes

---

## 4PM6-29

**Dimensions:** 84.00"H x 20.60"W x 29.00"D • 45 RMU • Weight Capacity: 1500 lbs.

**Features:**

- 19" EIA 310-E Compliant; 23" mounting available
- 12 Gauge Cold Rolled Steel (CRS) with M6 mounting
- Equipment mounting hardware included (50 x M6 Cage Nuts & Screws)
- Visit [werackyourworld.com](http://werackyourworld.com) for additional sizes

---

## CMR-45U

**Dimensions:** 84.00"H x 24.00"W x 21.00"D • 45 RMU • Weight Capacity: 1000 lbs.

**Features:**

- 19" EIA 310-E Compliant; adjustable to 23" mounting
- 23.938"W x 21.000"D Foot print will fit on 24" floor tile
- Tapped #12-24 front and back
- Manage high-density network equipment with ample cable room
- Top front & rear waterfall cable tray
- Two middle adjustable waterfall brackets (2)
- Eight rotating cable rings, 2.50" x 4.00"
- More than 88 cable tie slots
- Vertical channels, 3.06"W x 12.00"D

---

## GLRR-1984BA/GLRR-1984

**Dimensions:** 84.00"H x 20.31"W x 14.00"D • 45 RMU • Weight Capacity: 1500 lbs.

**Features:**

- Double Sided Extruded Aluminum, #12-24 Tapped Holes
- 19" EIA 310-E Compliant
- Equipment mounting hardware included
- Specialty shelves and cable management available

**CORPORATE  
HEADQUARTERS**

P.O. Box 551  
Edinboro, PA 16412  
1.866.TRY.GLCC  
(1.866.879.4522)  
Phone: 814.734.7303  
Fax: 814.734.3907  
[glcc@greatcabinets.com](mailto:glcc@greatcabinets.com)

**GREAT LAKES  
MANUFACTURING, INC.**

1521 Enterprise Road  
Corry, PA 16407  
Phone: 814.734.2436  
Fax: 814.665.7025  
[werackyourworld.com](http://werackyourworld.com)  
[glm@greatmanufacturing.net](mailto:glm@greatmanufacturing.net)

**WESTERN  
DISTRIBUTION**

4750 Joule Street  
Reno, NV 89502  
Phone: 775.829.9913  
Fax: 775.829.9926  
[glcc@greatcabinets.com](mailto:glcc@greatcabinets.com)

**GREAT LAKES  
INTERNATIONAL LTD.**

Aerbridge House, Unit 14  
Dunshaughlin Business Park  
Dunshaughlin Co. Meath  
Ireland  
Phone: 011 353 1 825 8777  
Fax: 011 353 1 825 8778

**GREAT LAKES  
HUNGARY KFT**

Zsurló utca 13  
8000 Székesfehérvár  
Hungary  
Phone: 011 36 22 880 420  
Fax: 011 36 22 880 429