

product spotlight

NEMA 12K WALL MOUNT ENCLOSURE

NEMA Type 12K Enclosures are constructed for indoor use to provide a degree of protection to personnel against access to hazardous parts; protection to equipment inside the enclosure against ingress of solid foreign objects (falling dirt and circulating dust, lint, and fibers); and protection with respect to harmful effects on the equipment due to the ingress of water (dripping and light splashing).

FEATURES

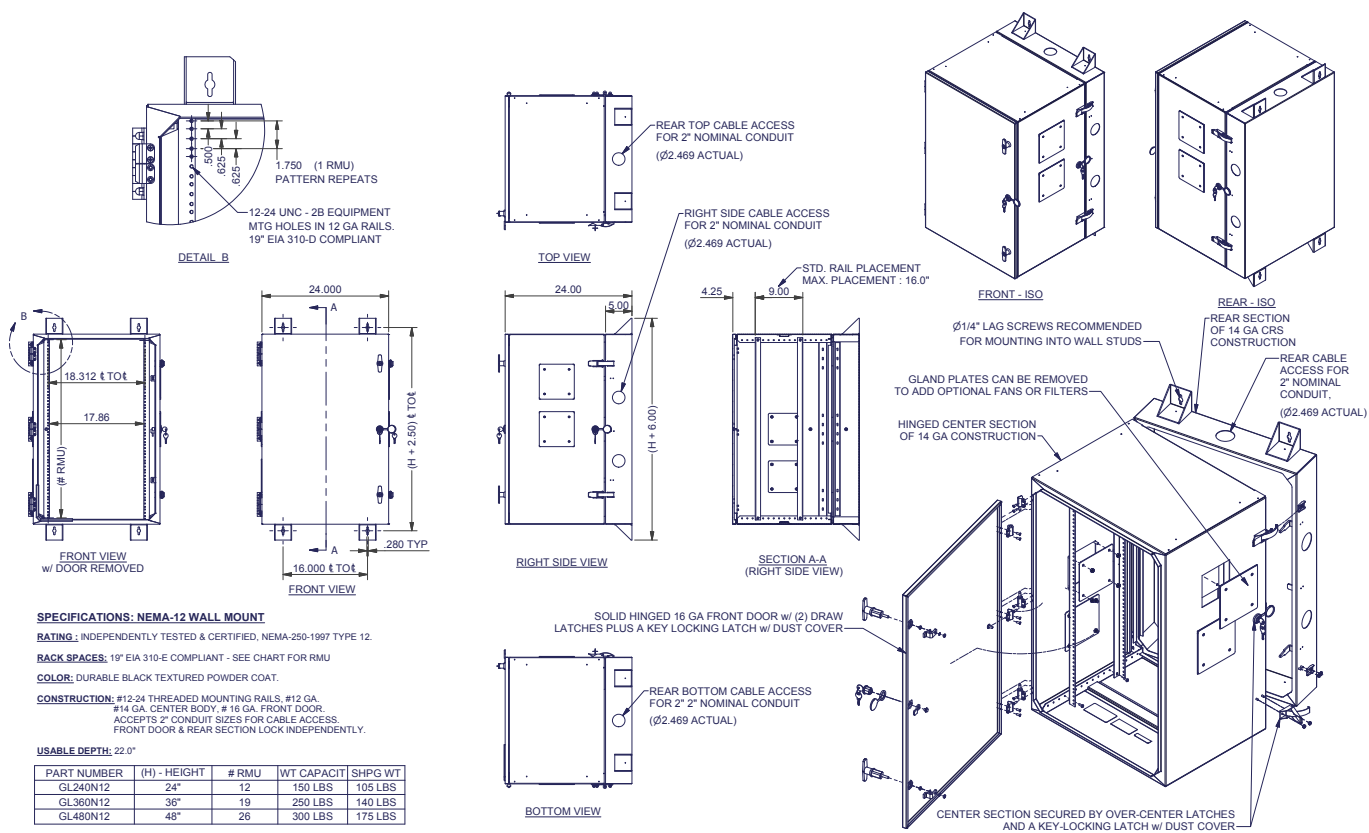
- 19" EIA 310-E Compliant
- 2 pair of #12-24 rails, adjustable front to rear; includes rack mounting hardware
- Keyed locked with dust covers
- 14 gauge main body and rear section
- Front and rear sections lock independently
- 2" conduit knockouts on back panels
- N12 wall mounts are reversible for left or right hand opening; N12A wall mounts are hinged on the left and are not reversible
- N12 wall mounts feature removable cover plates (on the left and right side of the center section) for fan and filter assemblies; N12A wall mounts feature a mounting pattern on the left side to accept AC units (fans cannot be used in conjunction with AC units)



Available in black only
 Visit: <https://goo.gl/L4ke4L>

PART NO.	DESCRIPTION
GL240N12	24.00"H x 24.00"W x 24.00"D, Rack Space 12 RMU, Wt. cap. 150 lbs., Shipping wt. 105 lbs.; can accept one FFKN12-A4
GL240N12A	Same as above except able to accept GL1000MMR/GL1300MMR AC Unit
GL360N12	36.00"H x 24.00"W x 24.00"D, Rack Space 19 RMU, Wt. cap. 250 lbs., Shipping wt. 140 lbs.; can accept two FFKN12-A4
GL360N12A	Same as above except able to accept GL1000MMR/GL1300MMR AC Unit
GL480N12	48.00"H x 24.00"W x 24.00"D, Rack Space 26 RMU, Wt. cap. 300 lbs., Shipping wt. 175 lbs.; can accept three FFKN12-A4
GL480N12A	Same as above except able to accept GL2200MMR AC Unit

NEMA 12K WALL MOUNT



For drawings of wall mounts that accept AC units, please visit WeRackYourWorld.com

ACCESSORIES

PART NO.	DESCRIPTION
GL1000MMR	1000 BTU AC Unit, 120V/60Hz, 3.1 amps; for use with GL240N12A and GL360N12A
GL1300MMR	1300 BTU AC Unit, 120V/60Hz, 3.1 amps; for use with GL240N12A and GL360N12A
GL2200MMR	2200 BTU AC Unit, 120V/60Hz, 3.1 amps; for use with GL480N12A
FFKN12-A4	Fan Assembly (includes filter) and exhaust filter, 38 CFM, 115V
FILTER-10	Package of five replacement filters for FFKN12-A4
7219-SR14	14 position (6 front/8 back) Power Strip for 19" mounting; 5-15R receptacle and 5-15P plug with surge protector

WeRackYourWorld.com

CORPORATE HEADQUARTERS

P.O. Box 551
Edinboro, PA 16412
1.866.TRY.GLCC
(1.866.879.4522)
Phone: 814.734.7303
Fax: 814.734.3907
glcc@greatcabinets.com

GREAT LAKES MANUFACTURING, INC.

1521 Enterprise Road
Corry, PA 16407
Phone: 814.734.2436
Fax: 814.665.7025
glm@greatmanufacturing.net

WESTERN DISTRIBUTION

4750 Joule Street
Reno, NV 89502
Phone: 775.829.9913
Fax: 775.829.9926
glcc@greatcabinets.com

SOUTHEAST DISTRIBUTION

3630 Shaw Blvd.
Suite 4, Naples, FL. 34117
Phone: 1.866.TRY.GLCC
Fax: 239.304.1226
glcc@greatcabinets.com

GREAT LAKES INTERNATIONAL LTD.

Aerbridge House, Unit 14
Dunshaughlin Business Park
Dunshaughlin Co. Meath
Ireland
Phone: 011 353 1 825 8777
Fax: 011 353 1 825 8778
glcc@greatcabinets.com

GREAT LAKES HUNGARY KFT

Zsurló utca 13
8000 Székesfehérvár
Hungary
Phone: 011 36 22 880 420
Fax: 011 36 22 880 429
glcc@greatcabinets.com