



product spotlight

SWING RACK DEEP (SRD)



FEATURES

- 19" EIA 310-E Compliant
- #10-32 mounting holes; includes rack management hardware
- Deeper than traditional swing racks
- Easy to assemble, install and mount

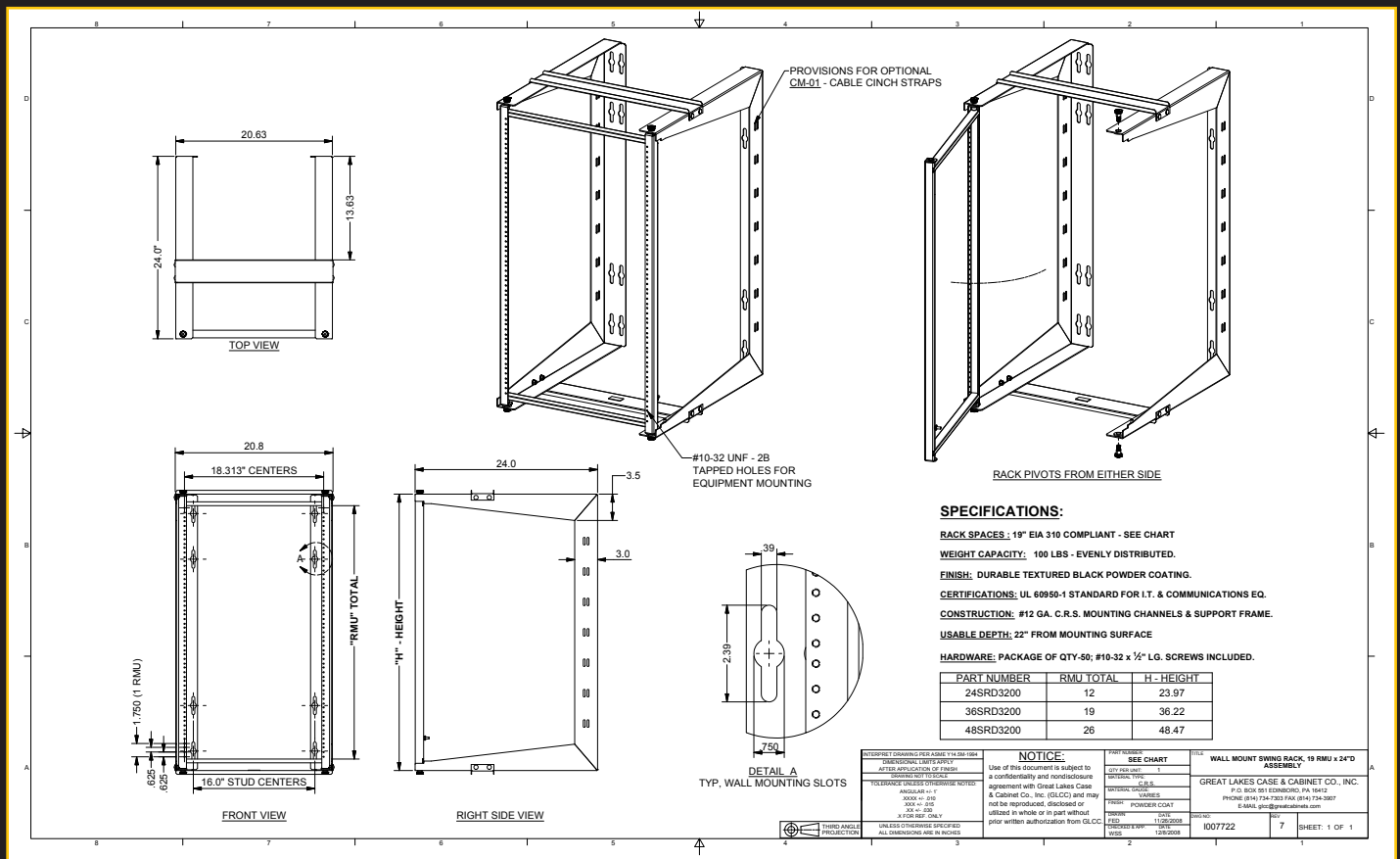
PART NO.

DESCRIPTION

GL24SRD	24"H x 20.75"W x 24"D, Usable depth 22", 12 RMU, Weight Capacity 100 lbs., Shipping weight 34 lbs.
GL36SRD	36.25"H x 20.75"W x 24"D, Usable depth 22", 19 RMU, Weight Capacity 100 lbs., Shipping weight 44 lbs.
GL48SRD	48.5"H x 20.75"W x 24"D, Usable depth 22", 26 RMU, Weight Capacity 100 lbs., Shipping weight 54 lbs.

ACCESSORIES

- | PART NO. | DESCRIPTION |
|-----------|---|
| 7219 | 6 position power strip for 19" mounting; 5-15R receptacle and 5-15P plug with surge suppressor |
| 7219-SR14 | 14 position (6 front/8 back) power strip for 19" mounting; 5-15R receptacle and 5-15P plug with surge protector |
| CBB-19 | Copper bus bar for 19" mounting (isolated) |
| CM-02 | Strain Relief Bar for 19" mounting, 1 RMU |
| CM-16 | Single-sided Cable Organizer for 19" mounting; plastic "fingers" and cover, 1 RMU |
| WMPK | Wall Mount Pole Kit for mounting to indoor poles |



WeRackYourWorld.com

CORPORATE HEADQUARTERS

P.O. Box 551
Edinboro, PA 16412
1.866.TRY.GLCC
(1.866.879.4522)
Phone: 814.734.7303
Fax: 814.734.3907
glcc@greatcabinets.com

GREAT LAKES MANUFACTURING, INC.

1521 Enterprise Road
Corry, PA 16407
Phone: 814.734.2436
Fax: 814.665.7025
glm@greatmanufacturing.net

WESTERN DISTRIBUTION

4750 Joule Street
Reno, NV 89502
Phone: 775.829.9913
Fax: 775.829.9926
glcc@greatcabinets.com

SOUTHEAST DISTRIBUTION

3630 Shaw Blvd.
Suite 4, Naples, FL 34117
Phone: 1.866.TRY.GLCC
Fax: 239.304.1226
glcc@greatcabinets.com

GREAT LAKES INTERNATIONAL LTD.

Aerbridge House, Unit 14
Dunshaughlin Business Park
Dunshaughlin Co. Meath
Ireland
Phone: 011 353 1 825 8777
Fax: 011 353 1 825 8778
glcc@greatcabinets.com

GREAT LAKES HUNGARY KFT

Zsurió utca 13
8000 Székesfehérvár
Hungary
Phone: 011 36 22 880 420
Fax: 011 36 22 880 429
glcc@greatcabinets.com