

product spotlight

WALL MOUNT LOW PROFILE: WLP SERIES

The NEW Great Lakes Wall Mount Low Profile series is ideal for small spaces and high-traffic areas. The WLP series provides 19 and 23" mounting for patch panels.



Tilt-out brackets
positioned downward



WLP with tilt-out brackets
and stagger brackets

Patch panel and powerstrip shown for reference only.

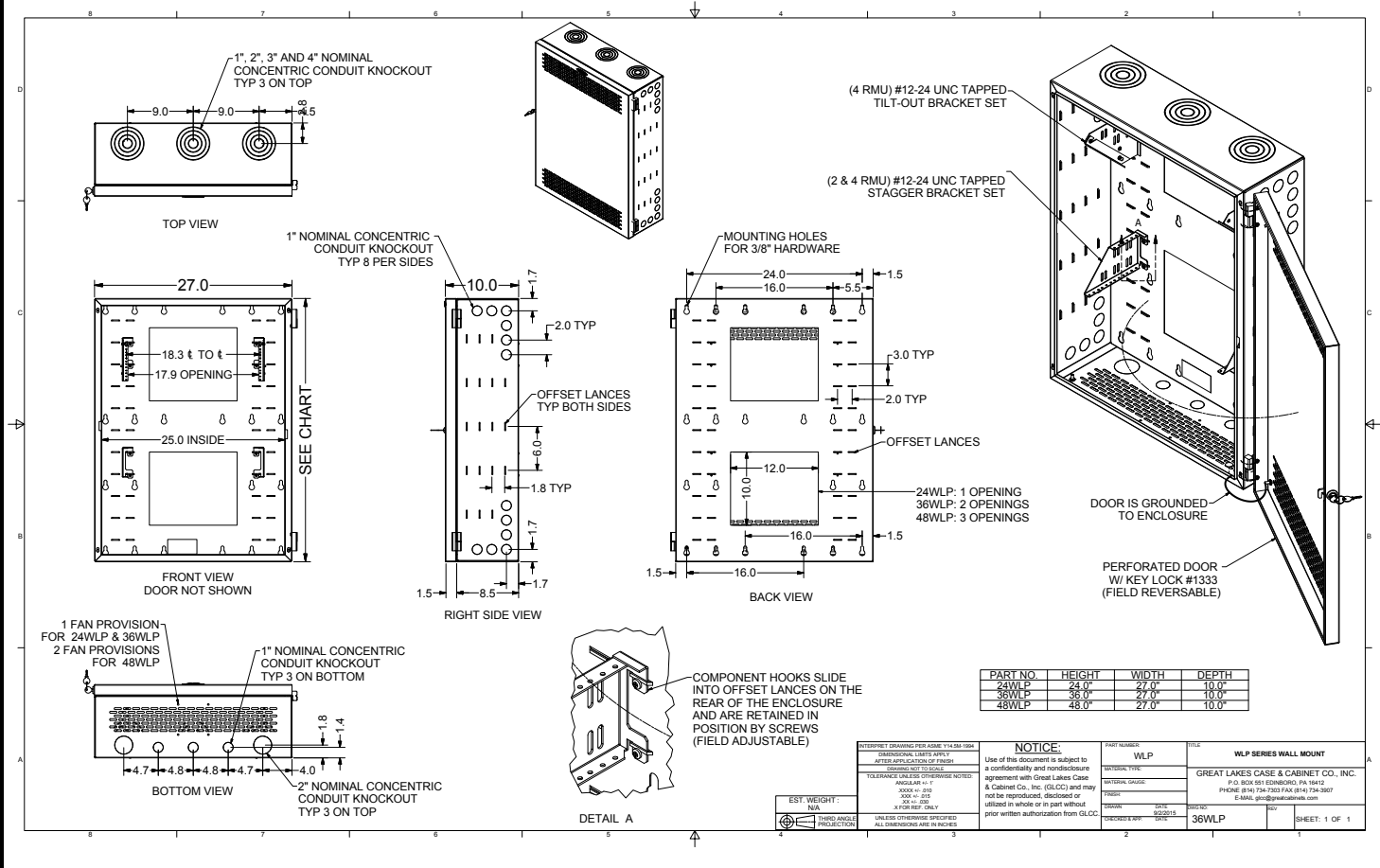
FEATURES

- Includes one pair of #12-24 stagger brackets (WLPSB) and one pair of #12-24 tilt-out brackets (WLPTOB); includes rack mounting hardware; additional bracket sets can be added
- 2 sets of mounting profile lances along the back panel to allow for 19 or 23" mounting; stagger and tilt-out brackets can be vertically adjusted to accept a variety of equipment depths
- 1, 2, 3, and 4" nominal concentric conduit knockouts on top of WLP
- 1 and 2" conduit knockouts on bottom of WLP
- 1" conduit knockouts on each side of WLP
- Cable management lances along both sides of WLP to accept optional accessories (cable rings and fiber boxes)
- Reversible front door
- GL24WLP and GL36WLP able to accept one, optional 7217-04 fan and filter assembly, GL48WLP able to accept two fans

PART NO.

DESCRIPTION

GL24WLP	24"H x 27"W x 10"D, Weight capacity 105 lbs., Shipping wt. 45 lbs.
GL36WLP	36"H x 27"W x 10"D, Weight capacity 105 lbs., Shipping wt. 68 lbs.
GL48WLP	48"H x 27"W x 10"D, Weight capacity 150 lbs., Shipping wt. 81 lbs.



ACCESSORIES PART NO.

DESCRIPTION

- WLPSB** Stagger Bracket Set, (top of bracket, 2 RMU; bottom of bracket, 4 RMU) for installation along mounting profile lances
- WLPTOB** Tilt-out Bracket Set, 4 RMU, for installation along mounting profile lances
- WLPHMB** Hook Mounted Bracket Set, 1 RMU, for installation along mounting profile lances
- WLPCR** Cable Management Ring Kit, includes 6 rings; for installation along mounting profile or cable management lances
- WLPLHFB** Hook Mounted Fiber Box Assembly for left hand use; for installation along mounting profile or cable management lances
- WLPRHFB** Hook Mounted Fiber Box Assembly for right hand use; for installation along mounting profile or cable management lances
- CM-06** Cinch Strap with buckle and grommet, 6"L, black
- 7217-04** Single Fan Assembly, 75 CFM

WeRackYourWorld.com

CORPORATE HEADQUARTERS

P.O. Box 551
Edinboro, PA 16412
1.866.TRY.GLCC
(1.866.879.4522)
Phone: 814.734.7303
Fax: 814.734.3907
glcc@greatcabinets.com

GREAT LAKES MANUFACTURING, INC.

1521 Enterprise Road
Corry, PA 16407
Phone: 814.734.2436
Fax: 814.665.7025
glm@greatmanufacturing.net

WESTERN DISTRIBUTION

4750 Joule Street
Reno, NV 89502
Phone: 775.829.9913
Fax: 775.829.9926
glcc@greatcabinets.com

SOUTHEAST DISTRIBUTION

3630 Shaw Blvd.
Suite 4, Naples, FL 34117
Phone: 1.866.TRY.GLCC
Fax: 239.304.1226
glcc@greatcabinets.com

GREAT LAKES INTERNATIONAL LTD.

Aerbridge House, Unit 14
Dunshaughlin Business Park
Dunshaughlin Co. Meath
Ireland
Phone: 011 353 1 825 8777
Fax: 011 353 1 825 8778
glcc@greatcabinets.com

GREAT LAKES HUNGARY KFT

Zsurló utca 13
8000 Székesfehérvár
Hungary
Phone: 011 36 22 880 420
Fax: 011 36 22 880 429
glcc@greatcabinets.com