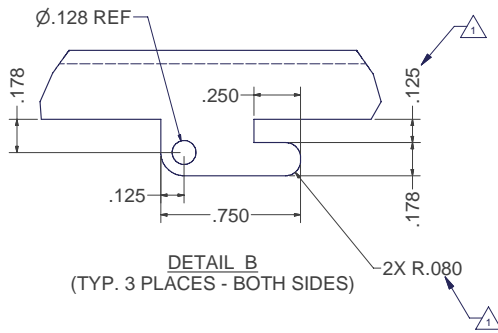
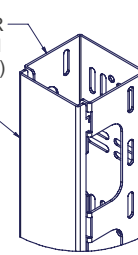


REVISION HISTORY			
REV	DESCRIPTION	DATE	APPROVED
0	ECC-02814	3/15/2010	JL
1	ECC-02884	6/10/10	CD

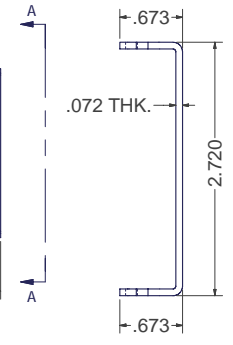
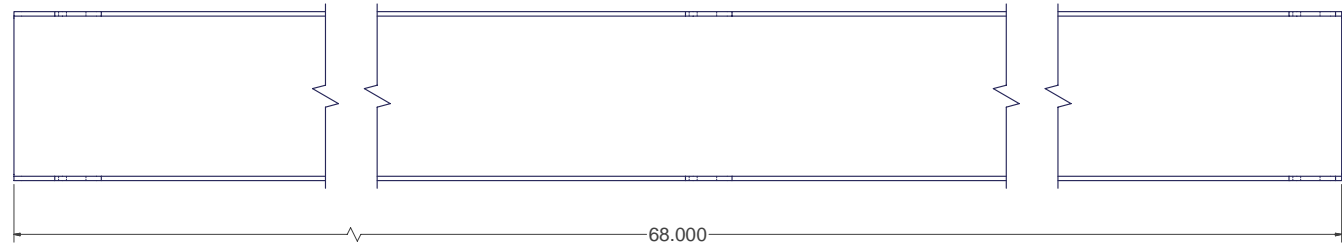
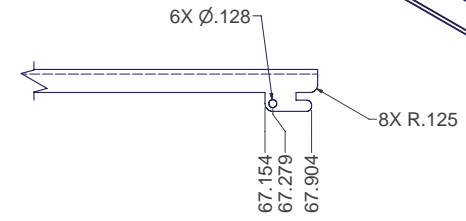
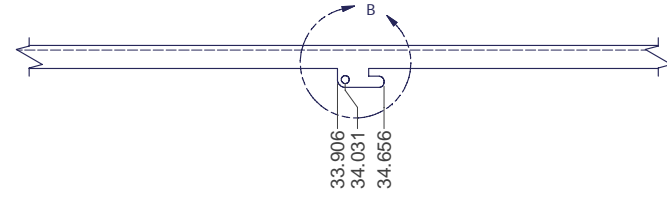
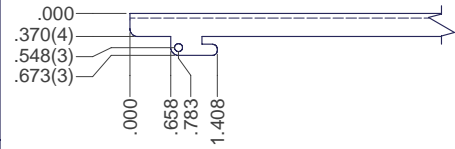
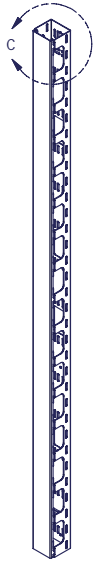


VERT CABLE TROUGH FOR 84"H ENCLOSURE, (I005641 REF ONLY, NOT INCLUDED)

VCT LATCH COVER, I011662 INSTALLED



DETAIL C



VIEW A-A (ENLARGED)

**SPECIAL NOTES:**

1. FINISH PER TD-09-103 (POWDER COAT), CLASS B, TEXTURE LEVEL 3 - ALL SURFACES UNLESS OTHERWISE NOTED.
2. DIMENSIONS APPLY BEFORE APPLICATION OF FINISH: ADD .005" TO EACH SURFACE FOR INSPECTION.
3. TYPICAL BEND = R0.030" x 90° INSIDE.
4. TO BE BULK-SHIPED ON PALLET.

INTERPRET DRAWING PER ASME Y14.5M-1994
DIMENSIONAL LIMITS APPLY AFTER APPLICATION OF FINISH DRAWING NOT TO SCALE
TOLERANCE UNLESS OTHERWISE NOTED: ANGULAR ±.1° XXX ±.010 XXX ±.015 XX ±.030 X FOR REF. ONLY
UNLESS OTHERWISE SPECIFIED ALL DIMENSIONS ARE IN INCHES

**NOTICE:**

Use of this document is subject to a confidentiality and nondisclosure agreement with Great Lakes Case & Cabinet Co., Inc. (GLCC) and may not be reproduced, disclosed or utilized in whole or in part without prior written authorization from GLCC.

PART NUMBER: <b>VCT-84CX100</b>	TITLE: <b>VCT LATCH COVER - FOR VCT84, 68" L</b>
QTY PER UNIT: 1	MATERIAL TYPE: CRS
MATERIAL GAUGE:	FINISH: SEE NOTES
DRAWN: JL	DATE: 3/15/2010
CHECKED & APP: WSS	DATE: 3-15-2010
DWG NO: <b>I011662</b>	REV: 1
SHEET: 1 OF 1	



THIRD ANGLE PROJECTION