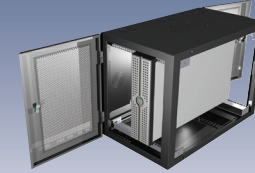




Country of Origin
Made in the USA



Custom manufacturing, assembly, color, and accessories available for all wall mounts; no minimum order required.

WM Series

WS Series

WD Series

WE Series

NEMA 12K

	WM Series	WS Series	WD Series	WE Series	NEMA 12K
WHY IT'S GREAT	Horseshoe knockouts on the top and bottom of the enclosure allow already configured patch panels to be installed; Accessory options include power, cooling and shelves	A feature-rich wall mount, offering many of the same options as a full size enclosure; Accessory options include power, cooling and shelves	Similar to the WS, the WD provides additional depth for larger pieces of equipment; Accessory options include power, cooling and shelves	Side mounting reduces the open space required to mount equipment; mounting across 3 studs provides extra stability	Provides protection against dust, dirt, and non-corrosive liquids; wall mount configurations available with AC units; compliant and tested to NEMA Type 12 standard
OTHER KEY FEATURES	<ul style="list-style-type: none"> Center swing-out section provides front/rear access to cables Reversible cabinet for left or right hand swing Vented sides for airflow Weight tested to 1/2" of deflection Optional dust kit to protect equipment in high dust/ industrial areas Optional Wall Mount Pole Kit to mount to indoor poles 	<ul style="list-style-type: none"> Center swing-out section provides front/rear access to cables Solid and vented side panels available Weight tested to 1/2" of deflection Caster mounting available 	<ul style="list-style-type: none"> Center swing-out section provides front/rear access to cables Vented sides for airflow Weight tested to 1/2" of deflection Caster mounting available Optional dust kit to protect equipment in high dust/ industrial areas 	<ul style="list-style-type: none"> Lift-off, lockable front panel Mesh doors to provide airflow inlet and exhaust removal 	<ul style="list-style-type: none"> Front door and rear section lock independently Fan cover plates can be removed to add fans/filters* <small>*N12A wall mounts that accept AC units do not feature removable cover plates; fans cannot be used in conjunction with AC units</small> Optional Wall Mount Pole Kit to mount to indoor poles
HEIGHT	24", 36", 48"	24", 36", 48"	24", 36", 48"	24"	24, 36, 48"
WIDTH	21.25"	24"	24"	36.10"	24"
OVERALL DEPTH	24.5" (GL2418WM: 15.5")	24"	32.13"	20.5"	24"
USABLE DEPTH	22"	21"	30"	Usable space 34"	22"
RMU	12, 19, 25	11, 18, 25	11, 18, 25	10	12, 19, 26
WT. CAP.	150, 250, 350 lbs.	250, 300, 350 lbs.	250, 300, 350 lbs.	350 lbs.	150, 250, 300 lbs.
MOUNTING RAILS	2 pair of #12-24; fully adjustable	2 pair of #12-24; fully adjustable	2 pair of #12-24; fully adjustable	2 pair of 3/8" sq. (M6); fully adjustable	2 pair of #12-24; fully adjustable
FRONT DOOR OPTION	Solid Steel, Plexiglas, or Mesh	Solid Steel, Plexiglas, or Mesh	Solid Steel, Plexiglas, or Mesh	Mesh	Solid Steel
HINGES	Full piano hinge provides added strength for rear section	Industrial grade hinges provide added strength for rear section	Pin hinges provide added strength for rear section	Standard hinges for easy door opening and removal	Industrial grade hinges provide added strength for rear section
CABLE MANAGEMENT	1, 2, and 3" conduit knockouts and horseshoe knockouts on top and bottom of rear section; 1, 2, and 3" on rear section	1, 2, 3, and 4" conduit knockouts on top and bottom of rear section; 1, 2, 3 and 4" on rear section	1, 2, 3, and 4" conduit knockouts on top and bottom of rear section; 1, 2, 3, and 4" on rear section	1, 2, and 3" conduit knockouts on top and bottom of the mounts; 1, 2, and 3" on rear	1, 2, and 3" conduit knockouts on side; 1, 2, and 3" conduit knockouts on top and bottom of rear section
GASKETING	Doors fully gasketed	Doors and sides fully gasketed	Doors fully gasketed	Doors fully gasketed	Sealing gasket
AIRFLOW	Optional 2 fan assembly	Optional 2 fan assembly	Optional 2 fan assembly	Optional 2 fan assembly	Optional filtered fans or AC units
STOCK COLOR	Black	Black	Black	Black	Black
STANDARDS	UL2416, RoHS II, OSHPD	UL2416, RoHS II	UL2416, RoHS II	UL2416, RoHS II	UL508A, RoHS II

Country of Origin
Made in the USA



Custom manufacturing, assembly, color, and accessories available for all wall mounts; no minimum order required.

	WLP Series	WR Series	15WM Series	SR Series	SRD Series
WHY IT'S GREAT	A low profile wall mount to mount patch panels and other 19 or 23" equipment when space is limited; two sets of mounting profile lances give the WLP tremendous flexibility	Ideal for small switch and patch panel applications	Ideal for classroom and small store applications where equipment (DVD players, switches, etc.) is used daily	An economical solution to mounting equipment where space is limited	Design and features of a rack in the convenience of a wall mount
KEY FEATURES	<ul style="list-style-type: none"> • Mounting pattern for 19 or 23" • Tilt-out and fixed brackets are standard; additional brackets can be added for more RMU • Brackets can be vertically adjusted to accept a variety of equipment depths • Optional cable rings and fiber spools 	<ul style="list-style-type: none"> • Bolt on cover panel for easy access to equipment • Wall mount holes for horizontal or vertical mounting • Side ventilation provides airflow 	<ul style="list-style-type: none"> • Main body separates from back panel allowing for easy, one person installation • Unique security bit required to remove main body from back panel • "Spare" 1 RMU tab on back panel allows power strip mounting 	<ul style="list-style-type: none"> • Easy assembly • 180° positive stop with stay open hinge pins • Optional Wall Mount Pole Kit to mount to indoor poles • Swing frame tapped front and rear for additional mounting space 	<ul style="list-style-type: none"> • Easy assembly • Optional Wall Mount Pole Kit to mount to indoor poles
HEIGHT	24, 36, 48"	4, 7.5"	15"	24, 36, 48"	24", 36", 48"
WIDTH	27"	19.75"	22.25"	20.75"	20.75"
OVERALL DEPTH	10"	21.63"	17.66"	18"	24"
USABLE DEPTH	Varies	21"	17"	16"	22"
RMU	Max. of 10 RMU along brackets	2, 4	7	12, 19, 26	12, 19, 16
WT. CAP.	250, 300, 350 lbs.	50, 75 lbs.	100 lbs.	50 lbs.	100 lbs.
MOUNTING RAILS	2 Sets of #12-24 brackets	One pair of #12-24	One pair of #10-32	One pair of #12-24	One pair of #10-32
FRONT DOOR OPTION	Perforated Steel Door	N/A	Solid Steel or Plexiglas	N/A	N/A
HINGES	Standard hinges	N/A	Standard hinges	Hinge Pins	N/A
CABLE MANAGEMENT	1, 2, 3, and 4" conduit knockouts on top; multiple knockouts on bottom and sides; slots along sides to accept multiple cable mngt. accessories	Provisions for cable cinch straps	½, ¾, 1, and 1 ½" conduit knockouts on top and bottom of back section; ½, ¾, 1, and 1 ½" on back section	Provisions for cable cinch straps	Provisions for cable cinch straps
GASKETING	N/A	N/A	N/A	N/A	N/A
AIRFLOW	Accepts up to 3, single fan	N/A	Optional single fan	N/A	N/A
STOCK COLOR	Black	Black	Black	Black	Black
STANDARDS	UL2416, RoHS II	UL2416, RoHS II	UL2416, RoHS II	UL2416, RoHS II	UL2416, RoHS II