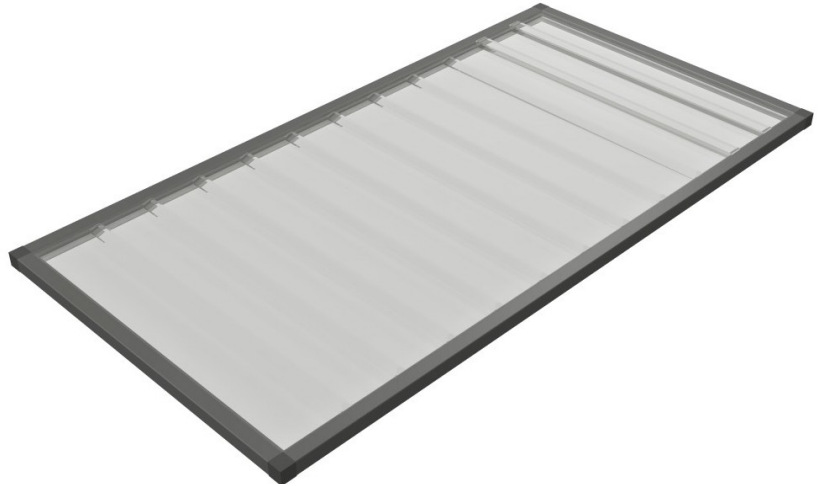


MELT-AWAY CEILING PANELS



Utilize ceiling panels with aisle doors and Great Lakes ES cabinets to create an efficient data center airflow strategy. Building obstructions, narrow aisles, uneven cabinet heights, or cabinets from another manufacturer? No problem—containment products, including doors and rigid walls, are built to fit the application! Custom, built to order to ensure the best fit, function and installation.

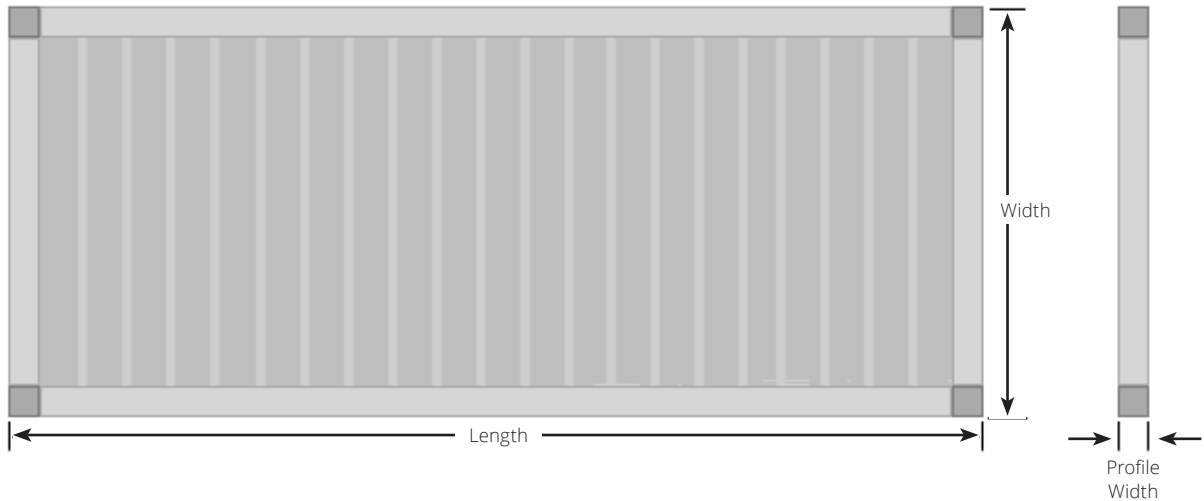
Custom, built to order to ensure the best fit, function and installation

FEATURES:

- Removable individual panels for easy access above the cabinets
- Heat activated design to shrink and drop away
- Sturdy aluminum frame
- Installation track and hardware
- Approved for use under fire suppression system

OPTIONS:

- Clear or corrugated panels
- Black/clear anodize frame
- Custom frame colors
- Leveling kits for uneven cabinets



Size		Paneling	
Width*	Up to 26"	Material	15 mil clear polyvinyl chloride
Length	Up to 96"	Color	Clear
Profile Width	1"	Smoke Deviation	ASTM E84
Tolerance	(+/-) 1/32"	Flame Spread ASTM E84	15 Test Results
Frame		Color	Clear
Material 6560	T-6 Temper Aluminum	UL-R4036 and FM-4651 rated for use under 165° F fire suppression system	
Tensile Strength	30,000 psi		

MEASUREMENTS NEEDED:

- Total Aisle length
- Aisle width (Use widest point as measurement)
- Height of all cabinets, in-row cooling units or UPS systems in row (Leveling kits and Rigid Walls can be used to create even rows).
- Ceiling can overlap 1" to 6" onto top of cabinets.
- Check for any obstructions above the cabinets around the inside edge of aisle.