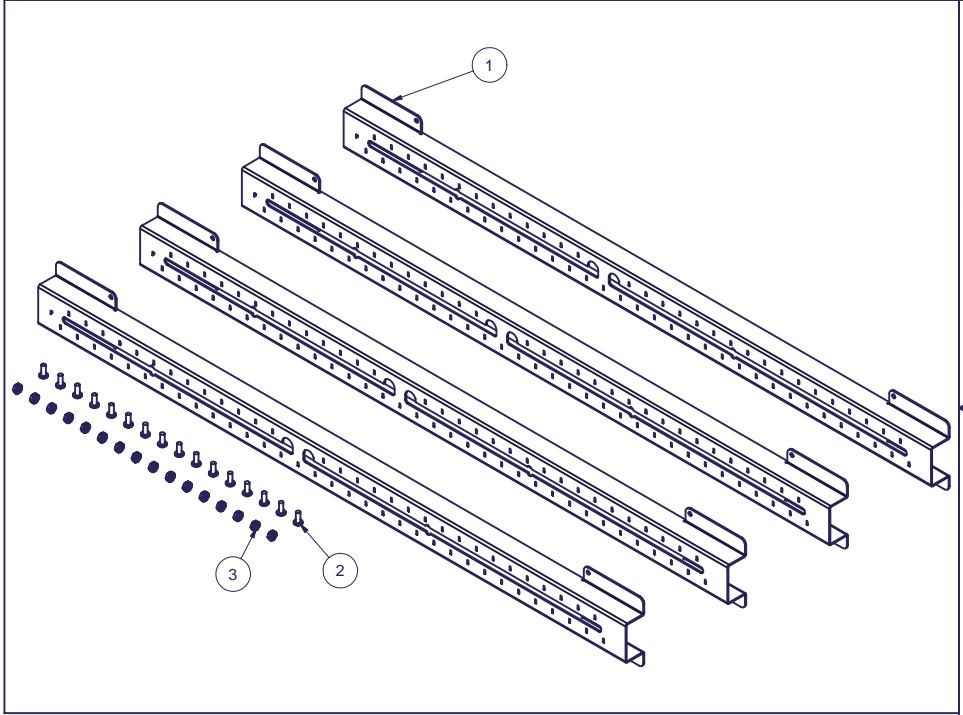
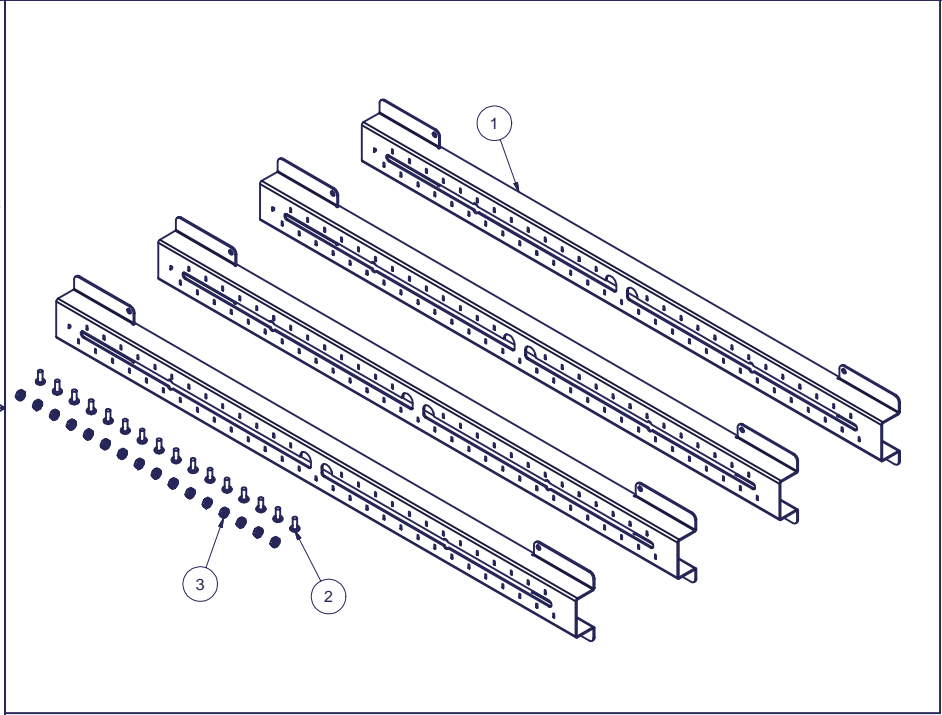


REVISION HISTORY			
REV	DESCRIPTION	DATE	APPROVED
0	ECO-01394	4/28/2004	WSS
1	ECO-01431	7/13/2004	WSS
2	ECO-02039	9/28/2007	WSS

Bill of Material - KIT# E23K32					
ITEM	PART NUMBER	QTY	DESCRIPTION	FILE NAME	REVISION
1	0032ES23X100	4	HORIZONTAL, 32"D, FOR 23"E.I.A. IN A 29"W ENHANCED ENCLOSURES WITH POWDER COATED RAILS.	I001717.ipt	2
2	SCR1032X1/2BLK	16	#10-32 x 1/2"L PAN HEAD PHIL TYPE 23 , BLACK	SCR1032X500BLK.ipt	-
3	10/32NUT	16	#10-32 NUT W/ EXTERNAL TOOTH LOCK WASHER	10-32NUT.iam	-

Bill of Material - KIT# E23K36					
ITEM	PART NUMBER	QTY	DESCRIPTION	FILE NAME	REVISION
1	0036ES23X100	4	HORIZONTAL, 36"D, FOR 23"E.I.A. IN A 29"W ENHANCED ENCLOSURES WITH POWDER COATED RAILS.	I001718.ipt	2
2	SCR1032X1/2BLK	16	#10-32 x 1/2"L PAN HEAD PHIL TYPE 23 , BLACK	SCR1032X500BLK.ipt	-
3	10/32NUT	16	#10-32 NUT W/ EXTERNAL TOOTH LOCK WASHER	10-32NUT.iam	-



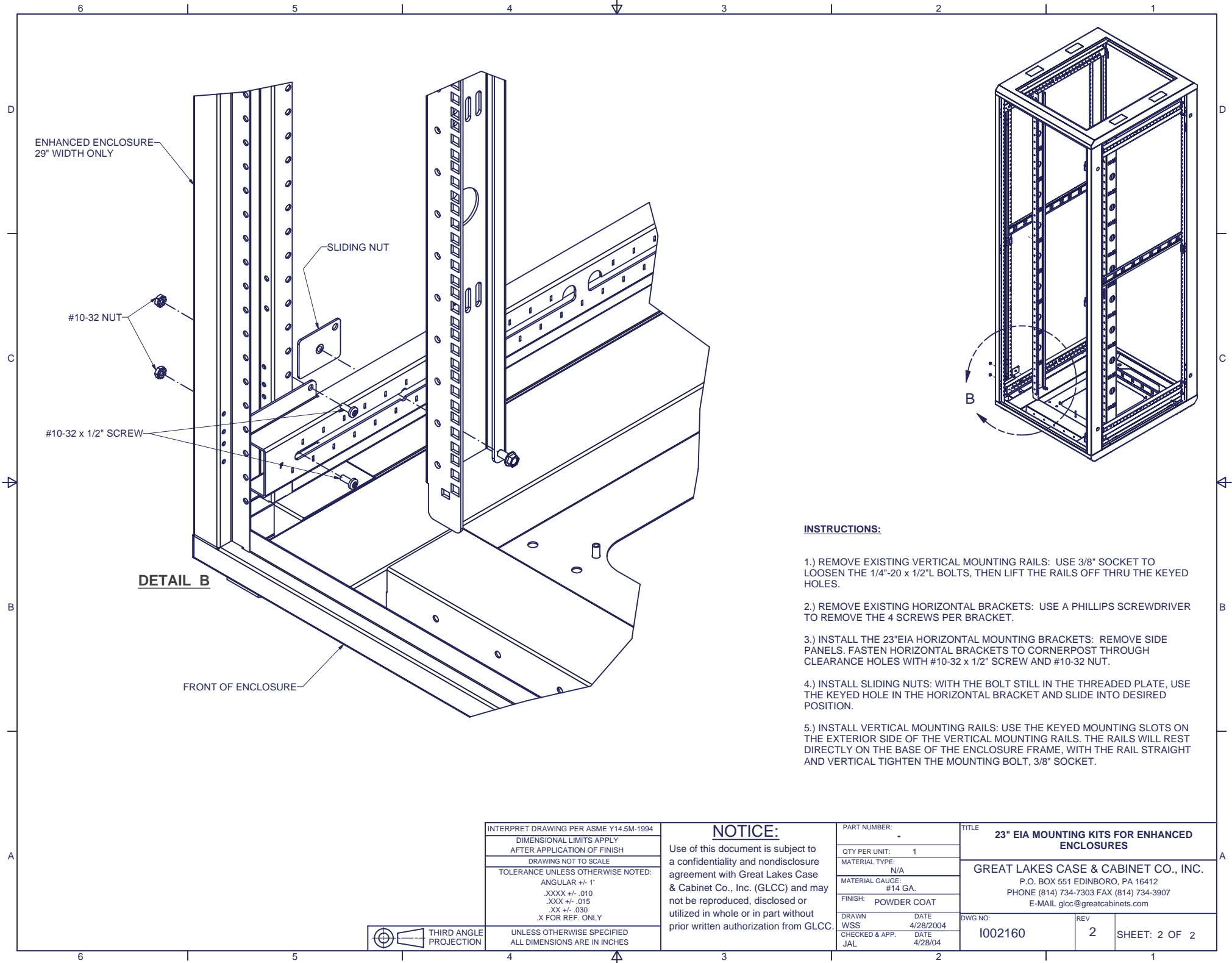
INTERPRET DRAWING PER ASME Y14.5M-1994
 DIMENSIONAL LIMITS APPLY
 AFTER APPLICATION OF FINISH
 DRAWING NOT TO SCALE
 TOLERANCE UNLESS OTHERWISE NOTED:
 ANGULAR +/- 1'
 .XXXX +/- .010
 .XXX +/- .015
 .XX +/- .030
 .X FOR REF. ONLY
 UNLESS OTHERWISE SPECIFIED
 ALL DIMENSIONS ARE IN INCHES

NOTICE:
 Use of this document is subject to a confidentiality and nondisclosure agreement with Great Lakes Case & Cabinet Co., Inc. (GLCC) and may not be reproduced, disclosed or utilized in whole or in part without prior written authorization from GLCC.

PART NUMBER: -
 QTY PER UNIT: 1
 MATERIAL TYPE:
 MATERIAL GAUGE:
 FINISH:
 DRAWN DATE: WSS 4/28/2004
 CHECKED & APP. DATE:

TITLE
23" EIA MOUNTING KITS FOR ENHANCED ENCLOSURES
 GREAT LAKES CASE & CABINET CO., INC.
 P.O. BOX 551 EDINBORO, PA 16412
 PHONE (814) 734-7303 FAX (814) 734-3907
 E-MAIL glcc@greatcabinets.com
 DWG NO: REV: 2 SHEET: 1 OF 2





INSTRUCTIONS:

- 1.) REMOVE EXISTING VERTICAL MOUNTING RAILS: USE 3/8" SOCKET TO LOOSEN THE 1/4"-20 x 1/2" L BOLTS, THEN LIFT THE RAILS OFF THRU THE KEYED HOLES.
- 2.) REMOVE EXISTING HORIZONTAL BRACKETS: USE A PHILLIPS SCREWDRIVER TO REMOVE THE 4 SCREWS PER BRACKET.
- 3.) INSTALL THE 23"EIA HORIZONTAL MOUNTING BRACKETS: REMOVE SIDE PANELS. FASTEN HORIZONTAL BRACKETS TO CORNERPOST THROUGH CLEARANCE HOLES WITH #10-32 x 1/2" SCREW AND #10-32 NUT.
- 4.) INSTALL SLIDING NUTS: WITH THE BOLT STILL IN THE THREADED PLATE, USE THE KEYED HOLE IN THE HORIZONTAL BRACKET AND SLIDE INTO DESIRED POSITION.
- 5.) INSTALL VERTICAL MOUNTING RAILS: USE THE KEYED MOUNTING SLOTS ON THE EXTERIOR SIDE OF THE VERTICAL MOUNTING RAILS. THE RAILS WILL REST DIRECTLY ON THE BASE OF THE ENCLOSURE FRAME, WITH THE RAIL STRAIGHT AND VERTICAL TIGHTEN THE MOUNTING BOLT, 3/8" SOCKET.

INTERPRET DRAWING PER ASME Y14.5M-1994 DIMENSIONAL LIMITS APPLY AFTER APPLICATION OF FINISH DRAWING NOT TO SCALE TOLERANCE UNLESS OTHERWISE NOTED: ANGULAR +/- 1' .XXXX +/- .010 .XXX +/- .015 .XX +/- .030 .X FOR REF. ONLY	
UNLESS OTHERWISE SPECIFIED ALL DIMENSIONS ARE IN INCHES	

NOTICE:
 Use of this document is subject to a confidentiality and nondisclosure agreement with Great Lakes Case & Cabinet Co., Inc. (GLCC) and may not be reproduced, disclosed or utilized in whole or in part without prior written authorization from GLCC.

PART NUMBER: -	
QTY PER UNIT: 1	
MATERIAL TYPE: N/A	
MATERIAL GAUGE: #14 GA.	
FINISH: POWDER COAT	
DRAWN: WSS	DATE: 4/28/2004
CHECKED & APP. JAL	DATE: 4/28/04

TITLE 23" EIA MOUNTING KITS FOR ENHANCED ENCLOSURES	
GREAT LAKES CASE & CABINET CO., INC. P.O. BOX 551 EDINBORO, PA 16412 PHONE (814) 734-7303 FAX (814) 734-3907 E-MAIL glcc@greatcabinets.com	
DWG NO: 1002160	REV: 2
SHEET: 2 OF 2	

